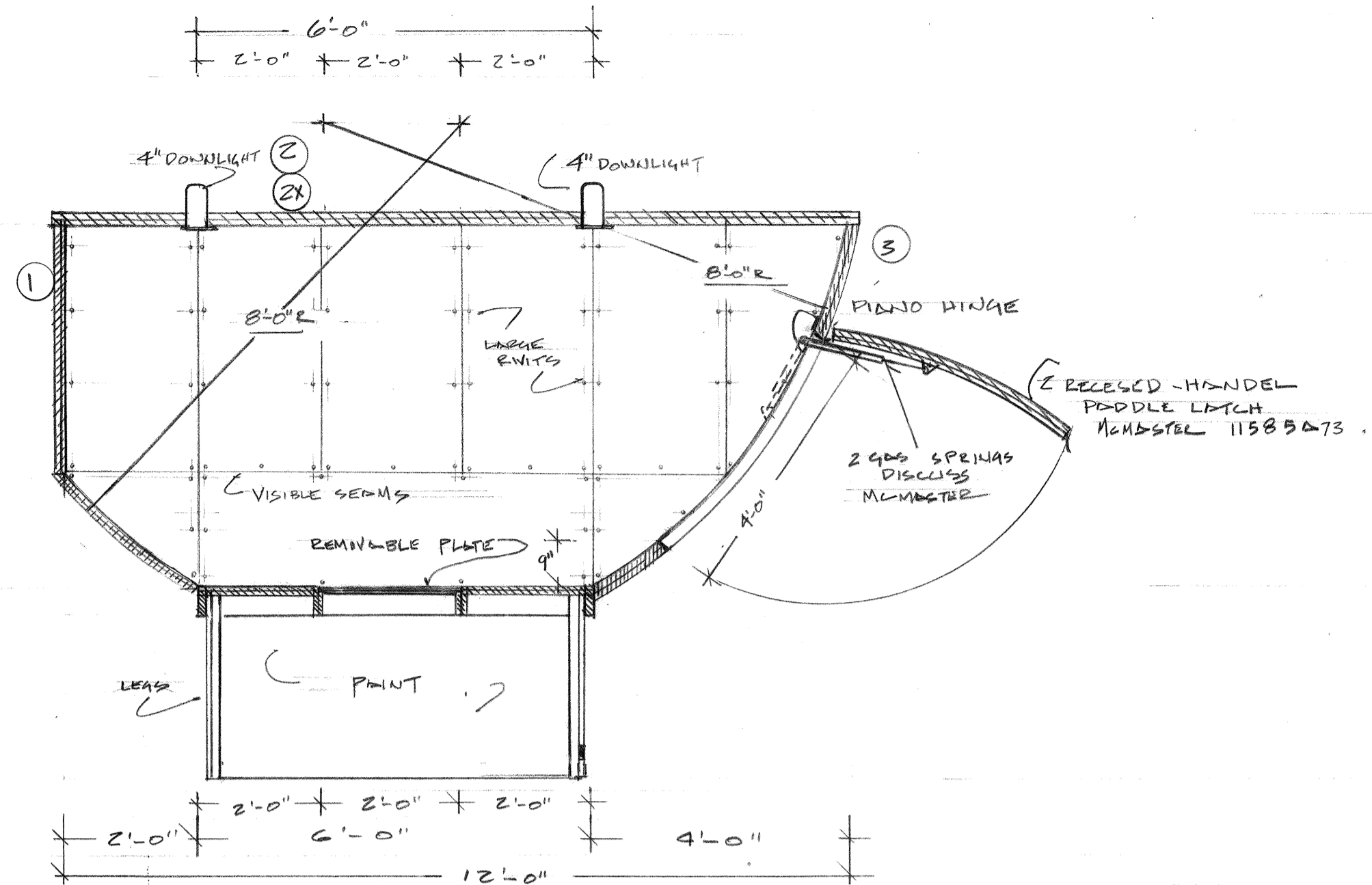
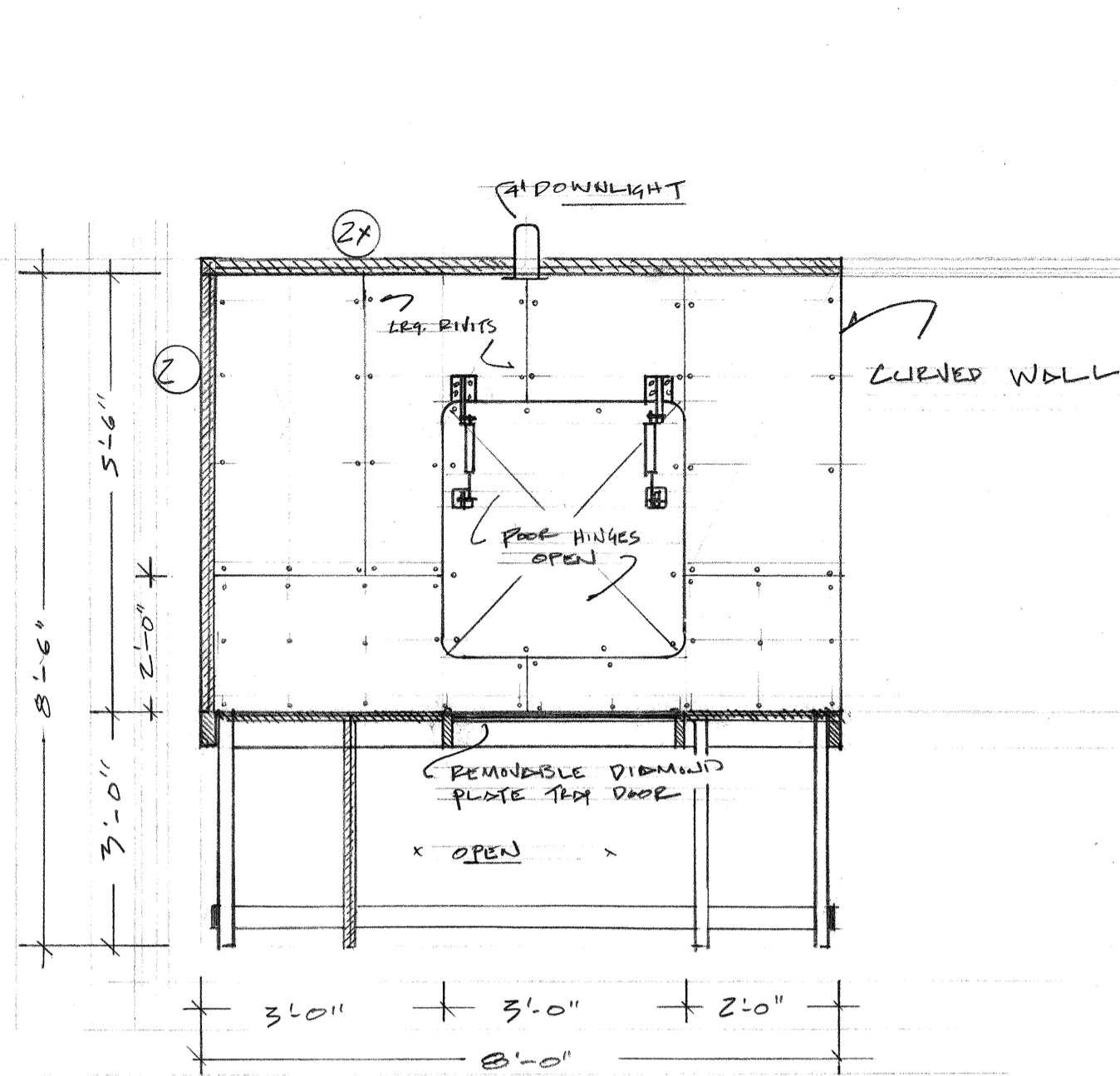


S.P. CARGO HOLD
SCALE 1/2" = 1'-0"



U.S. CARGO HOLD
SCALE 1/2" = 1'-0"



S.L. DOOR
SCALE 1/2" = 1'-0"

Antislip Tape
Quick and easy to apply, this antislip tape has a heavy duty, high tract stairs to prevent slips. You can walk on tape immediately after installat

Abrasive Antislip Tape

Roll	Disc	Black	Colors
Wd. x Lg.	Thick.	Each	Each
1" x 50'	0.063"	6970764 \$9.44	6970722 \$11.88
2" x 30'	0.063"	6970723 12.29	6970731 13.87
2" x 30'	0.063"	6970713 12.18	6970731 13.87
2" x 30'	0.063"	6970718 20.30	6970731 13.87
4" x 30'	0.063"	6970719 26.80	6970719 30.50
4" x 30'	0.063"	6970751 48.70	6970726 63.33
6" x 30'	0.063"	6970752 54.43	6970726 63.33
6" x 30'	0.063"	6970753 67.83	6970726 63.33

Antislip Floor Plates

Add slip resistance to any floor as well as reverts

(A) Diamond Tread Aluminum—Made of rust-free, these plates have a raised diamond-tread finish that's easy on your hands, knees, and feet. Adhesive-backed models are quick and easy to install. Backing and stick plates in place on any surface.

(B) Abrasive Steel—Plates have a unique grit-l compound and UV-resistant, aggressive slip-resistant surface.

(C) Abrasive UHMW Plastic—Virtually maintenance-free and UV-resistant, these plates have an em coating for slip resistance. They can be cut to size with carbide-tipped blades. Color is black.

Wd. x Lg.	Thick.	Each
(A) Diamond Tread Aluminum		
48" x 48"	1/4"	6245119 \$271.87
48" x 48"	1/2"	6245117 233.88
48" x 96"	1/4"	6245122 531.89
48" x 96"	1/2"	6245122 711.15
48" x 144"	1/4"	6245123 595.95
(B) Abrasive Steel		
24" x 24"	1/4"	4917111 48.33
24" x 48"	1/4"	4917121 91.67
48" x 48"	1/4"	4917131 146.67
(C) Abrasive Plastic		
24" x 24"	1/4"	4374751 80.00
24" x 48"	1/4"	4374752 160.00
48" x 48"	1/4"	4374753 320.00
48" x 96"	1/4"	4374754 590.77

Recessed-Handle Pull-to-Open Latches

You'll often see these easy-to-open latches, also known as paddle latches, on electrical panels, cabinets, and lockers. Just pull the recessed handle to open; the paddle is spring-loaded, so it returns to the closed position on its own. Available for right- and left-hand use. Max. latch distance is the max. allowable space between the bolt and the front surface of the door.

E Mounting hardware is concealed for a finished look. Comes with mounting bracket and mounting screw. Key-locking latches are keyed alike (all open with key number CH571) and have two keys.

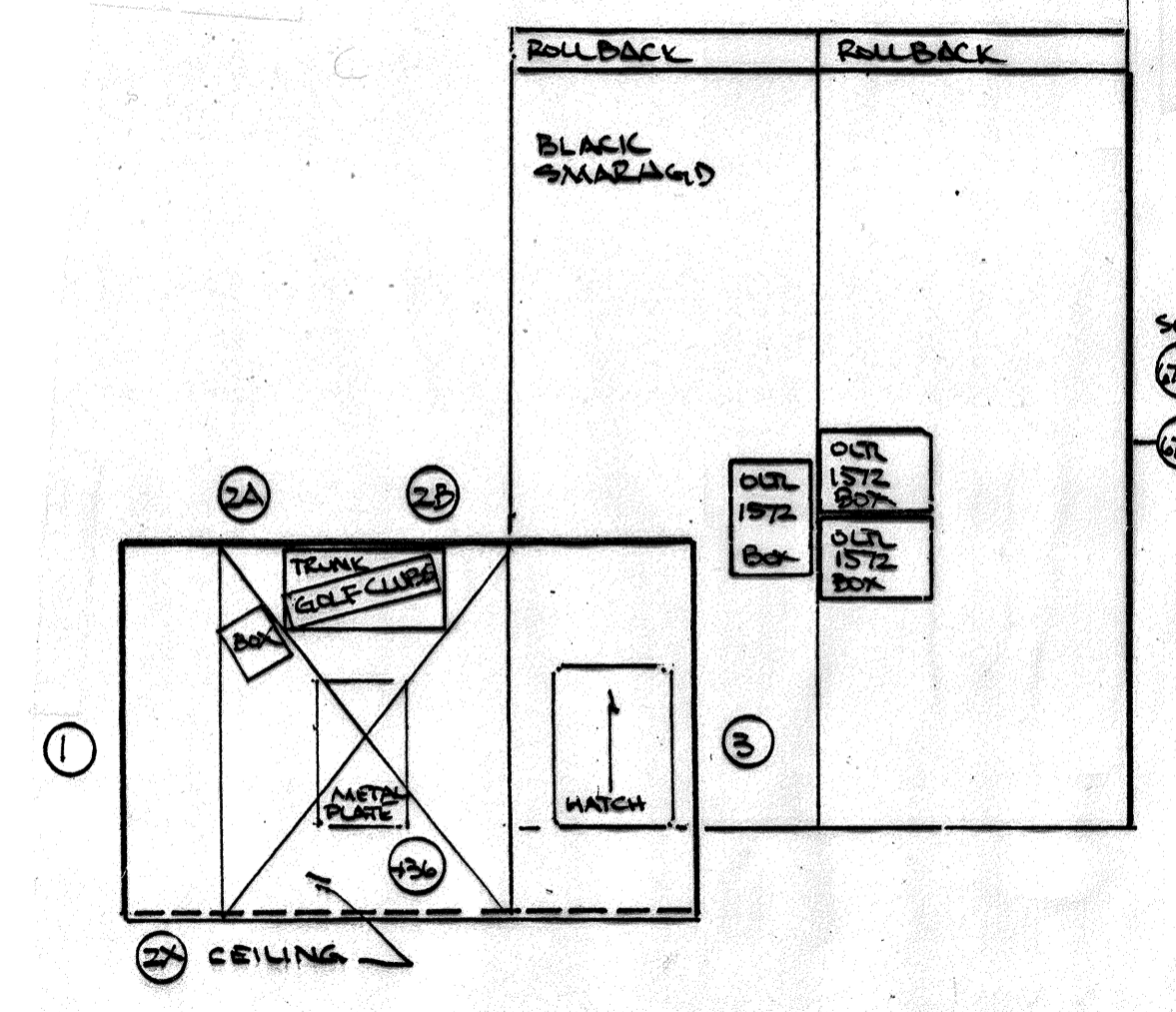
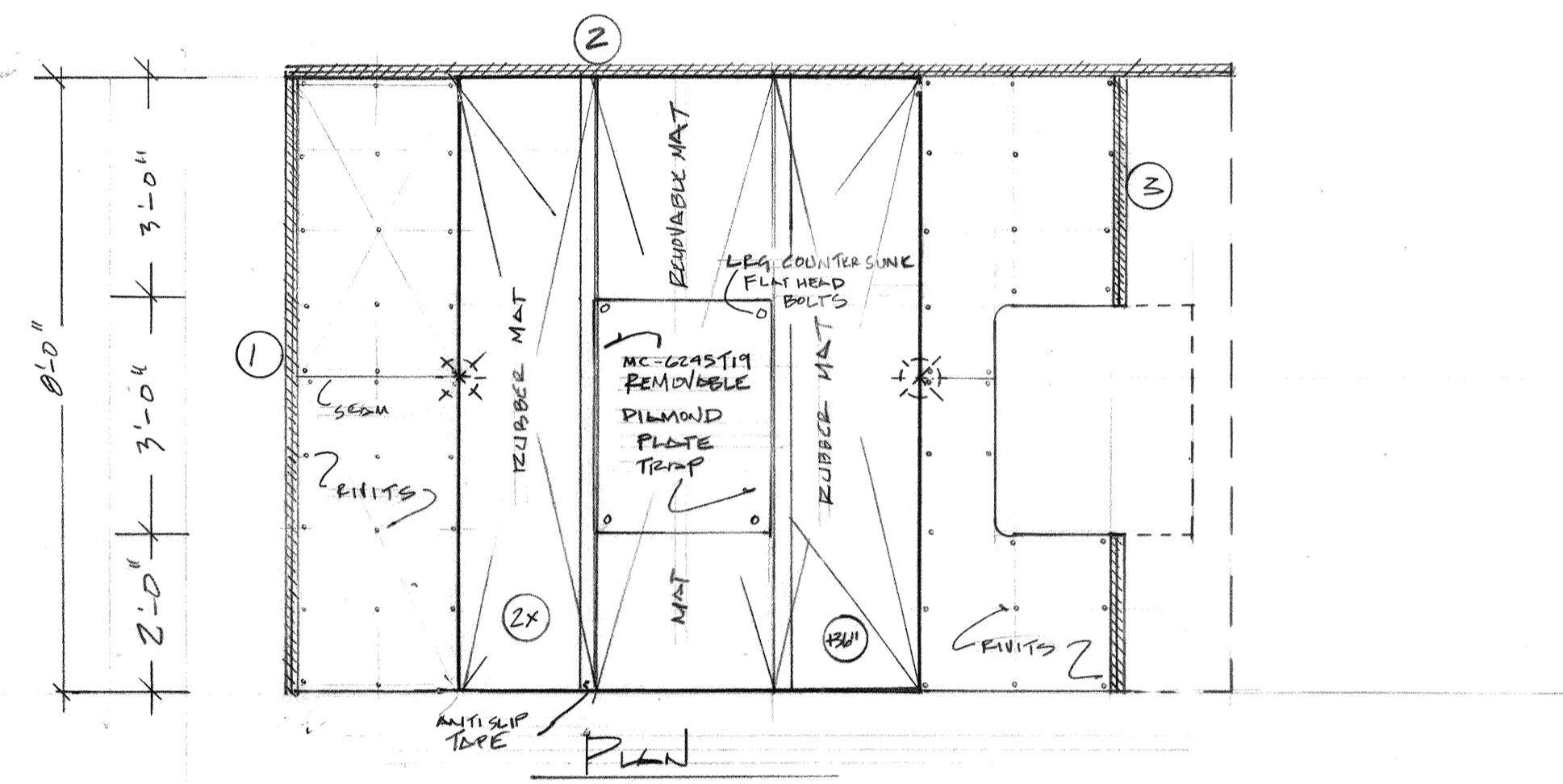
F Mount with #8 screws (not included) or weld in place. Key-locking latch is keyed alike (all open with key number CH571) and comes with one key. Combination-locking latch has a three-digit combination lock. Dial is 1" dia. and made of black die cast zinc.

G Mounting hardware is concealed for a finished look. Requires #8 mounting screws (not included).

H Latches have a three-digit combination lock. Dial is 1" dia. and made of black die cast zinc. Mounting screws not included; 1158546 requires #10 screws, 1158547 requires #8 screws.

Material	Max. Door Thick.	Max. Latch Distance	Max. Cutout Ht. x Wd.	O'ail Ht. x Wd.	Back Proj.	Screw Holes, Cb-to-Cb.	Bolt Extension	Each
Nonlocking								
E Type 304 SS (Dull Finish)	1/4"	3/4"	1 1/2" x 1 1/2"	1 7/8" x 1 1/4"	3/8"	1 1/2"	1/4"	11585411 \$9.78
E Type 304 SS (Dull Finish)	1/4"	3/4"	1 1/2" x 1 1/2"	1 7/8" x 1 1/4"	3/8"	1 1/2"	1/4"	11585412 17.20
E Type 304 SS (Dull Finish)	1/4"	3/4"	2 1/4" x 2 1/4"	2 1/4" x 3 3/4"	3/8"	1 1/2"	1/4"	11585413 33.84
E Type 304 SS (Dull Finish)	1/4"	3/4"	2 1/4" x 4 1/4"	2 1/4" x 4 1/4"	3/8"	1 1/2"	1/4"	11585414 48.53
E Steel (Black Finish)	1/4"	3/4"	2 1/4" x 2 1/4"	2 1/4" x 3 3/4"	3/8"	1 1/2"	1/4"	11585471 21.57
E Steel (Black Finish)	1/4"	3/4"	2 1/4" x 4 1/4"	2 1/4" x 4 1/4"	3/8"	1 1/2"	1/4"	11585472 28.12
E Steel (Nickel-Plated Finish)	1/4"	3/4"	2 1/4" x 2 1/4"	2 1/4" x 3 3/4"	3/8"	1 1/2"	1/4"	1075A1 8.87
E Type 302 SS (Dull Finish)	1/4"	3/4"	2 1/4" x 2 1/4"	2 1/4" x 3 3/4"	3/8"	1 1/2"	1/4"	11585477 45.85
Key Locking								
F Steel (Black Finish)	1/4"	3/4"	2 1/4" x 4 1/4"	2 1/4" x 4 1/4"	3/8"	1 1/2"	1/4"	11585473 37.93
F Type 304 SS (Dull Finish)	1/4"	3/4"	2 1/4" x 4 1/4"	2 1/4" x 4 1/4"	3/8"	1 1/2"	1/4"	11585474 59.89
F Steel (Nickel-Plated Finish)	1/4"	3/4"	1 1/2" x 3 3/4"	1 1/2" x 3 3/4"	3/8"	1 1/2"	1/4"	1075A2 21.64
Combination Locking								
G Steel (Black Finish)	1/4"	3/4"	1 1/2" x 3 3/4"	1 1/2" x 3 3/4"	3/8"	1 1/2"	1/4"	11585445 25.20
H Type 304 SS (Polished Finish)	1/4"	3/4"	2 1/4" x 3 3/4"	2 1/4" x 3 3/4"	3/8"	1 1/2"	1/4"	11585446 46.95
H Type 304 SS (Polished Finish)	1/4"	3/4"	3 1/4" x 4 1/4"	3 1/4" x 4 1/4"	3/8"	1 1/2"	1/4"	11585447 47.44

* When through-hole mounted, these latches have a max. door thickness equal to the max. latch distance; otherwise there is no maximum.



OLD STOCK CINDER BLOCK SET & AIRPLANE BELLY

UNION STAMP S.D. 1104 STUDIO DESIGNER 	AMERICAN BROADCASTING COMPANIES abc		DRAWING NO. 1
	PROD: ALL MY CHILDREN	STUDIO TV 23	OF 1
	SET: AIR PLANE BELLY	DEL. DATE: 2-27-08	
	SCALE: 1/2" = 1'-0"	PROD. DATE: 2-28-08	
	DRAWN:	DESIGNER: P. MANNING	
DATE:	DRAFTSMAN: M. GARDNER		