

Crossbar Exit Devices

Schlage Lever Locksets

Just apply slight pressure on the crossbar to unlatch the door. These exit devices are designed to fit 2 1/2" thick, 7'-6" high doors. Each has a built-in hold-down feature you can engage to keep the door in the unlatched position, allowing traffic to enter and exit freely. Mount the hardware, strike plate, and instructions as directed.

For double doors, order two of each exit device. A vertical center support for double doors is sold separately.

You can use these exit devices alone or pair them with door handles (handles described on the schedule of the door). All handles (except pull handles) come with a Schlage C keyway cylinder and two keys.

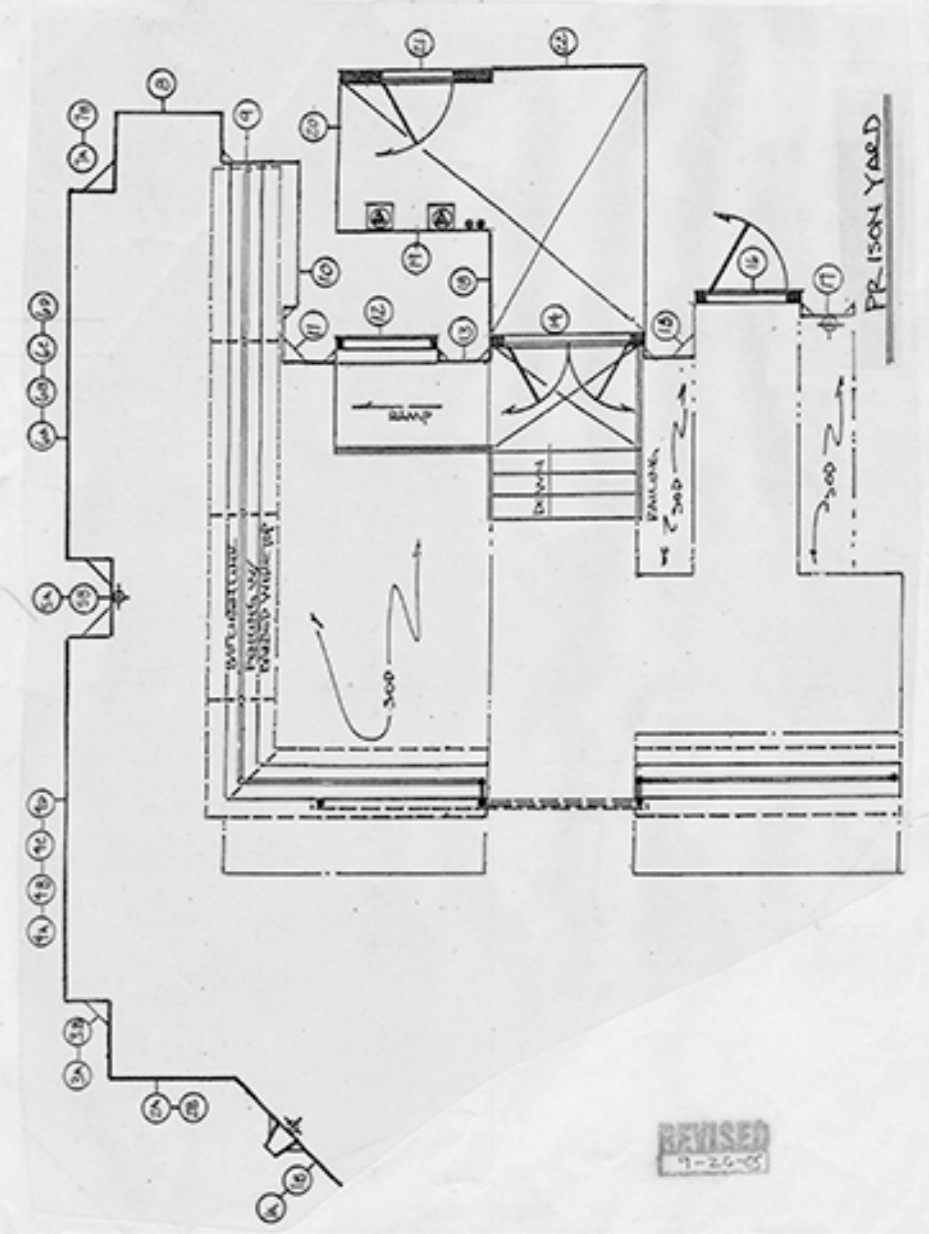
Locks built for right or left-hand operation. Right-hand and left-hand devices are available for right- and left-hand doors. Handles mount from the door. Weather devices have double-throw keys to prevent lock tampering. The crossbar locking mechanism is recessed into the side of the door.

Standard Door

For exit devices, please specify finish, door handle, door handle, or optional door handle. For handles, please specify finish, door handle, or door handle and style of the exit device on the other side of the door.

Exit Device	Model	Price
Basic Lockset	1218A11	\$37.50
Vertical Rod	1218A2	\$37.50
Handle for Left Hand Door	1218A3	\$37.50
Handle for Right Hand Door	1218A4	\$37.50
Weather-Resistant with Heavy Duty	1218A5	\$55.00
Weather-Resistant with Heavy Duty	1218A6	\$55.00
Left Hand Lever	1218A7	\$55.00
Right Hand Lever	1218A8	\$55.00

A Use some 1/2" for door handle information.



UNION STAMP

AMERICAN BROADCASTING COMPANIES abc

PROD: *ONE LIFE TO LIVE* STUDIO 17

SET: *PRISON TIER*

SCALE: *1/2" = 1'-0"* DEL. DATE: 10-15-05

DRAWN: 9-22-05 PROD. DATE: 10-14-05

DESIGNER: *R. HANLEY* DRAFTSMAN: *M. PAPPAS*

S.D. 1104 SCENIC DESIGNER

REVISION 9-22-05

DRAWING NO. 2 OF 4