

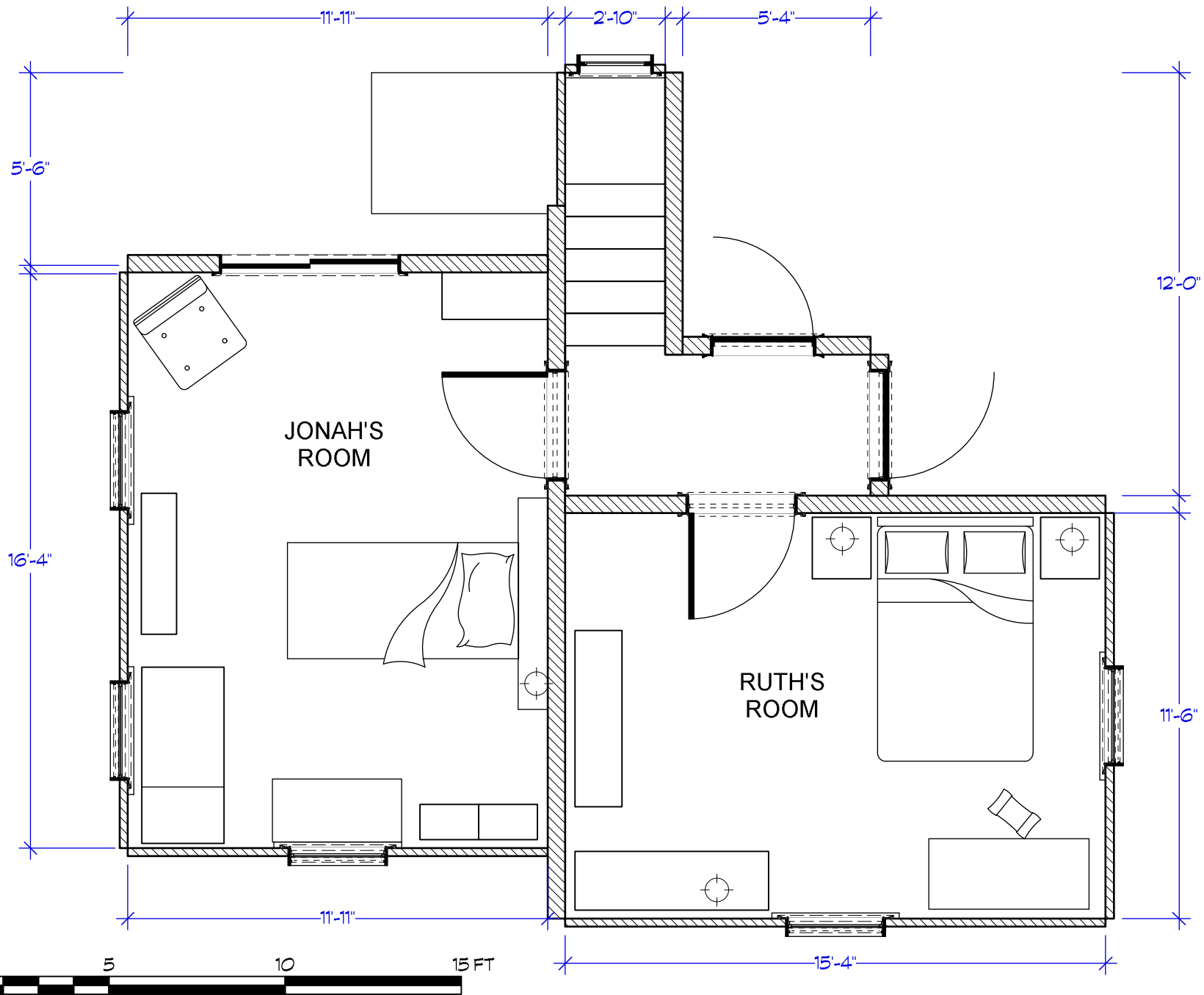
PROD. DESIGNER: CURT BEECH
 ART DIRECTOR: MARCI MUDD
 DRAWING BY: M. FAHRER

SCENE #:
 5, 6, 8, 11, 12
 LOCATION:
 STAGE 27

SHOOT DATE:
 DAY 11 4/1/19
 SCALE:
 1/4"=1'-0"

SET #:
 102
 EPISODE:
 101

**JONAH'S
 DOWNSTAIRS**



PROD. DESIGNER: CURT BEECH
ART DIRECTOR: MARCI MUDD

SCENE #:
10,19,21,50,51

SHOOT DATE:
3/5/19

SET #:
103

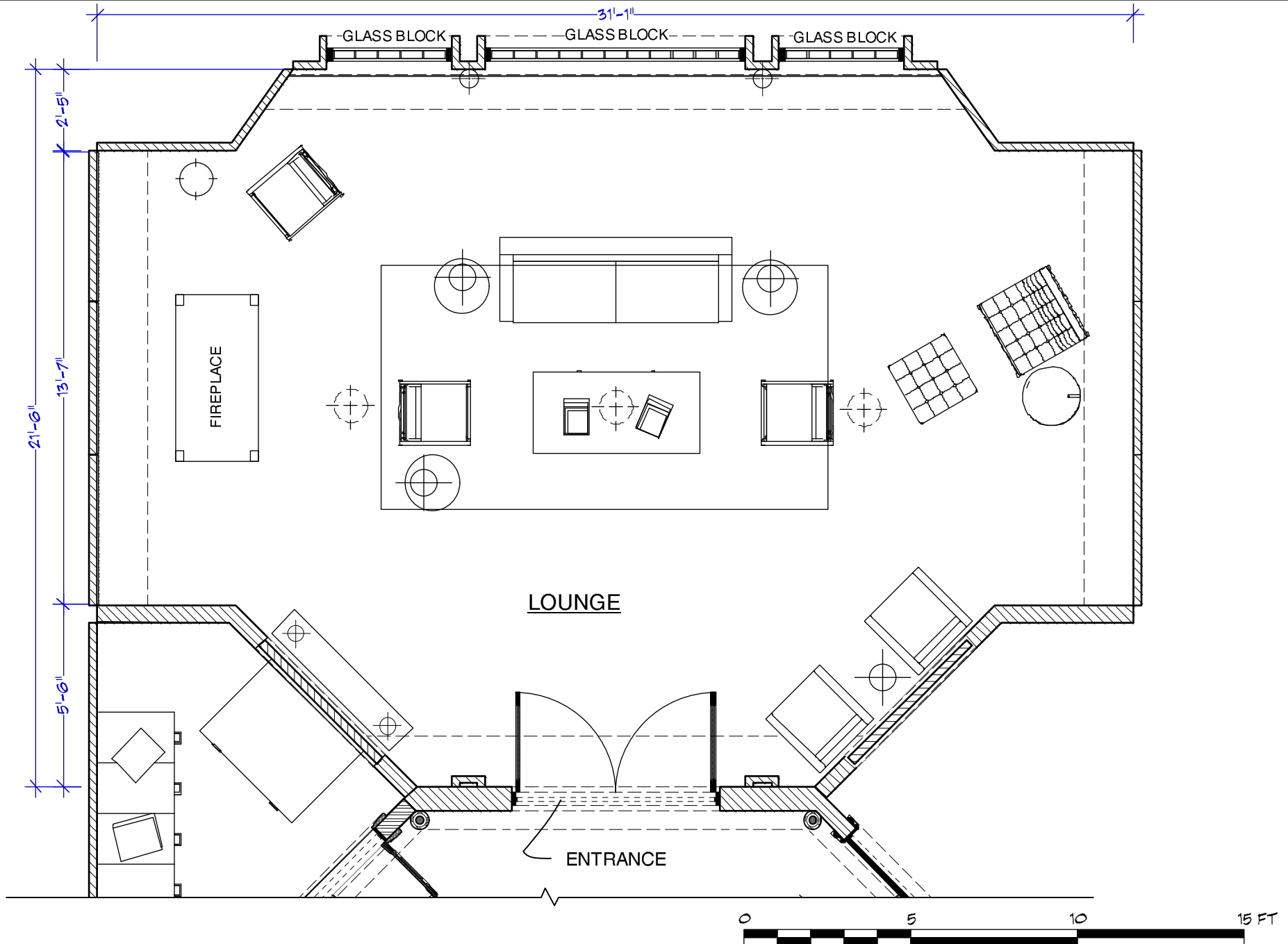
DRAWING BY: M. FAHRER

LOCATION:
STAGE 27

SCALE:
1/4"=1'-0"

EPISODE:
101

**JONAH'S
UPSTAIRS**



PROD. DESIGNER: CURT BEECH
 ART DIRECTOR: MARCI MUDD

DRAWING BY: M. FAHRER

SCENE #:
 65

LOCATION:
 STEINER STAGE 28

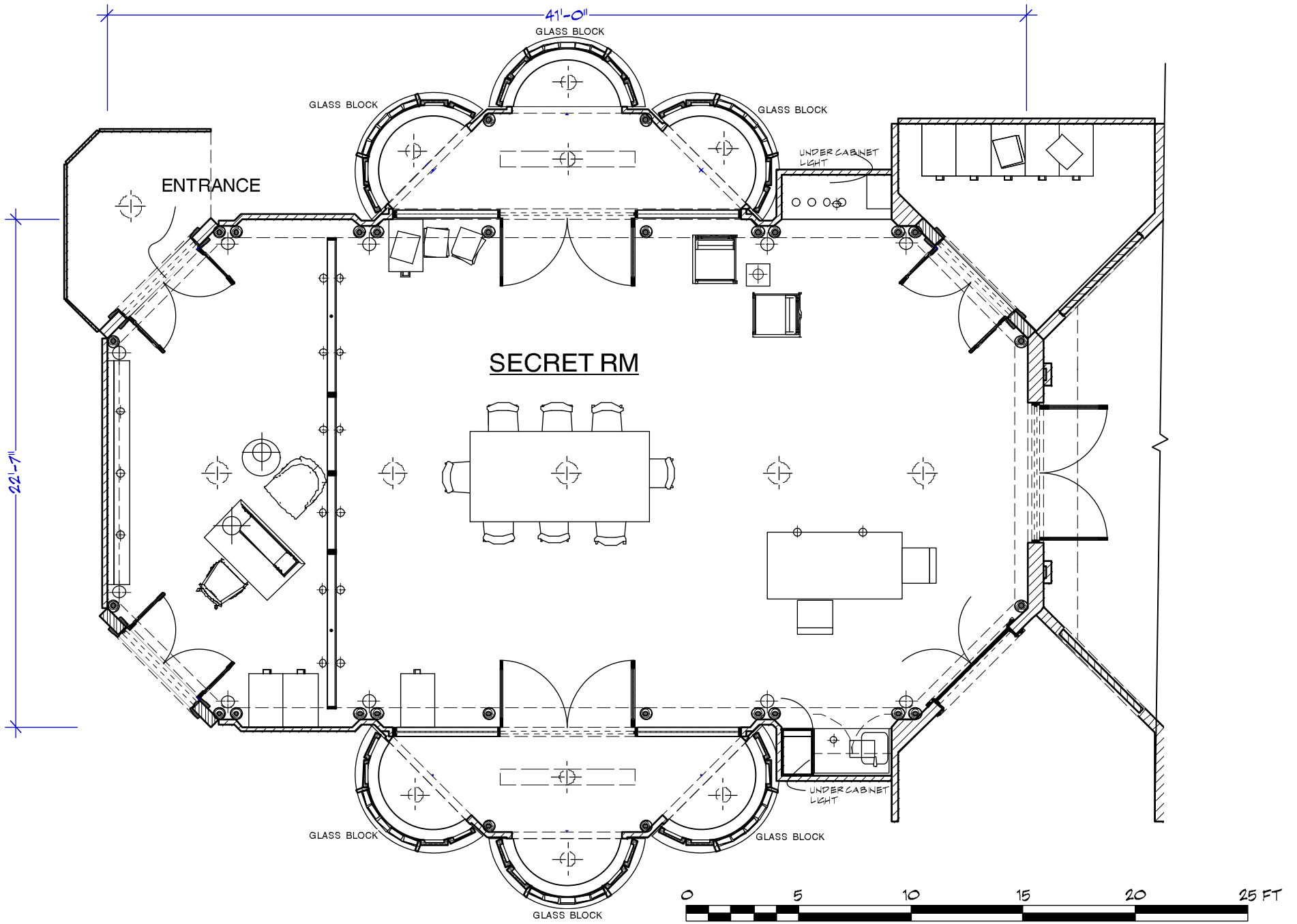
SHOOT DATE:
 DAY #13 4/11/19

SCALE:
 1/4"=1'-0"

SET #:
 106

EPISODE:
 101

**BAT CAVE
 LOUNGE**



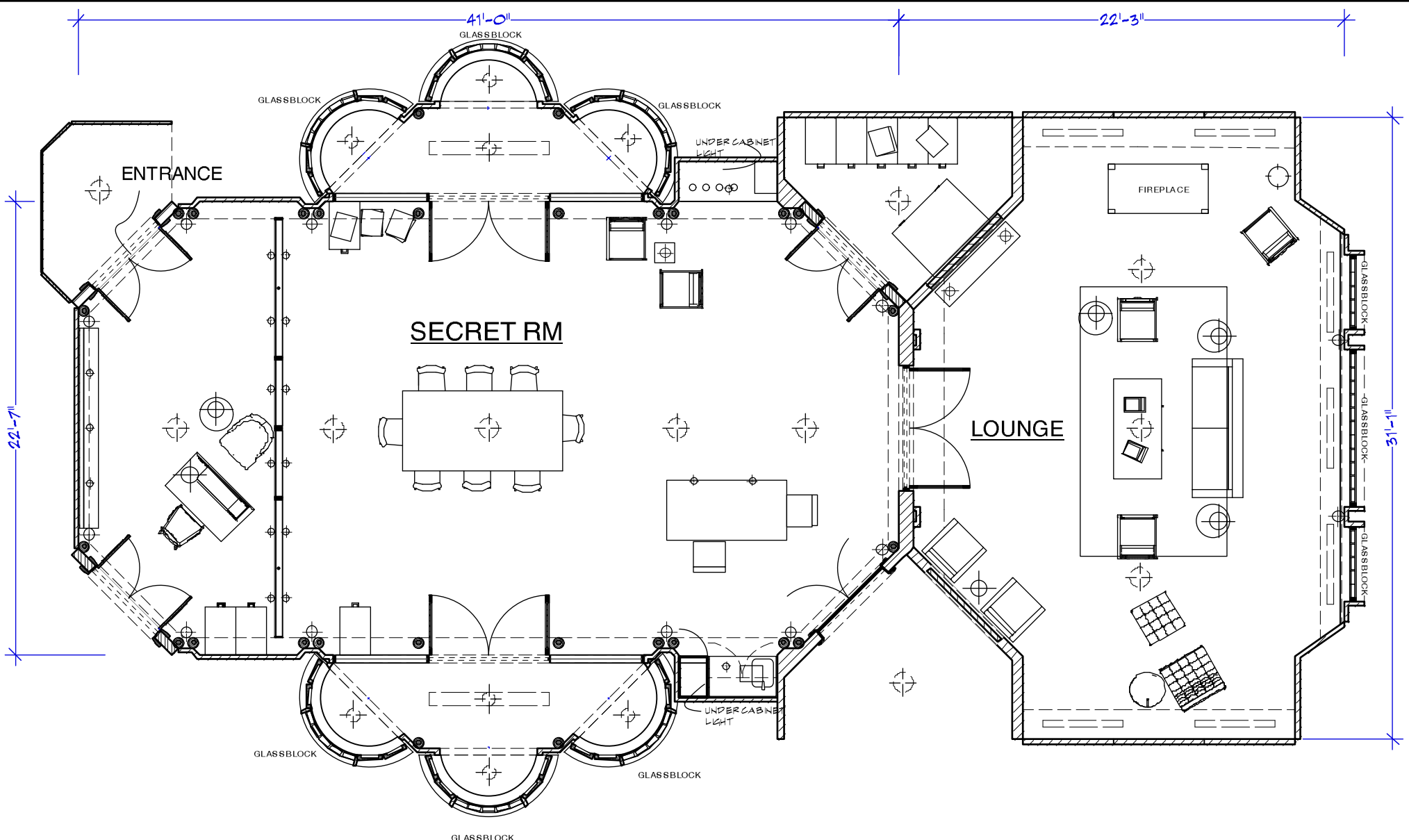
PROD. DESIGNER: CURT BEECH
 ART DIRECTOR: MARCI MUDD
 DRAWING BY: M. FAHRER

SCENE #:
 47,65
 LOCATION:
 STEINER 28

SHOOT DATE:
 DAY#13-17 04/5 - 04/11
 SCALE:
 1:70

SET #:
 106
 EPISODE:
 101

**BAT CAVE
 SECRET ROOM**



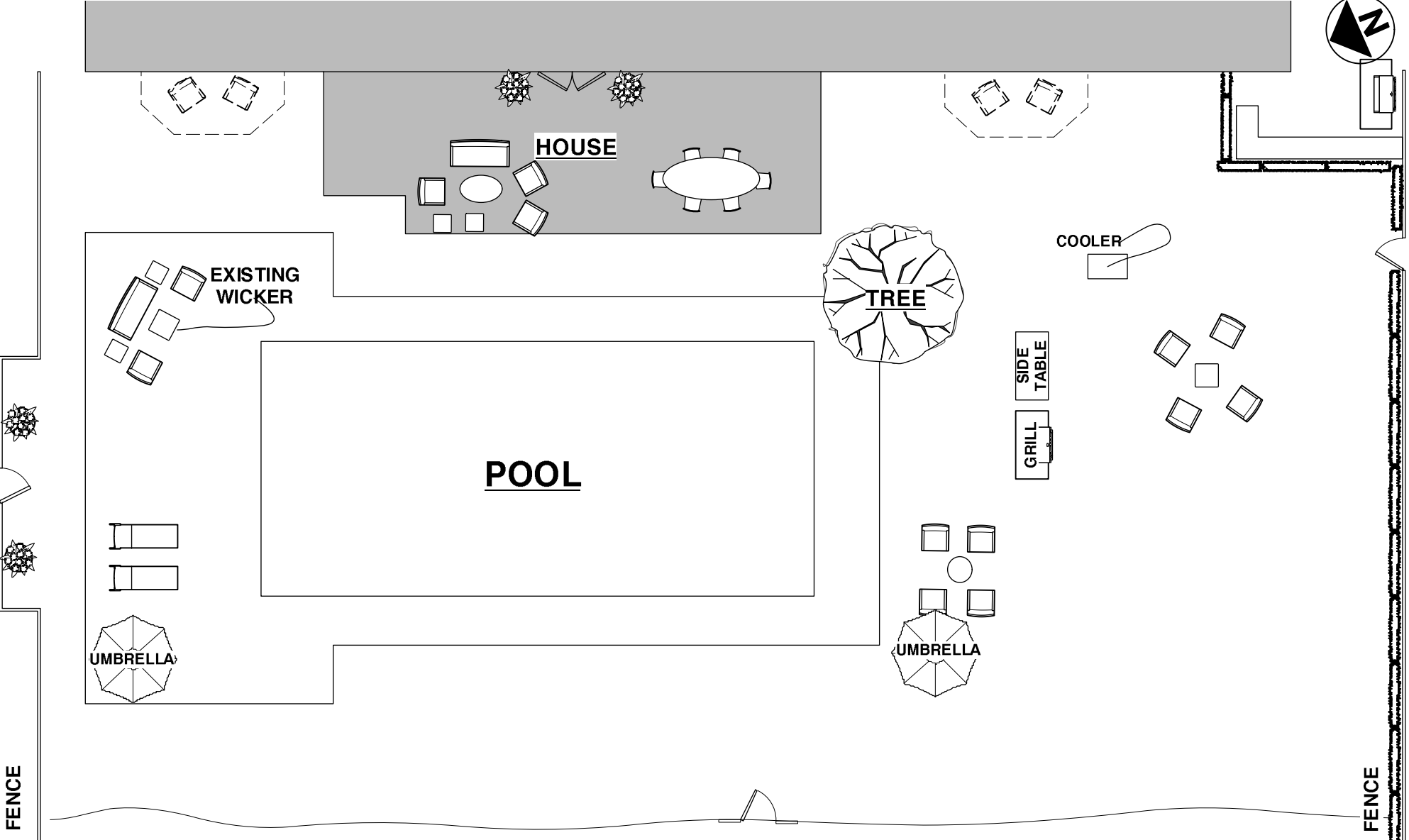
PROD. DESIGNER: CURT BEECH
 ART DIRECTOR: MARCI MUDD
 DRAWING BY: M. FAHRER

SCENE #:
 47, 65
 LOCATION:
 STEINER STAGE 28

SHOOT DATE:
 DAY#13-17 04/5 - 04/11
 SCALE:
 1:80

SET #:
 106
 EPISODE:
 101

BAT CAVE



PROD. DESIGNER: CURT BEECH
 ART DIRECTOR: MARCI MUDD
 DRAWING BY: M. FAHRER

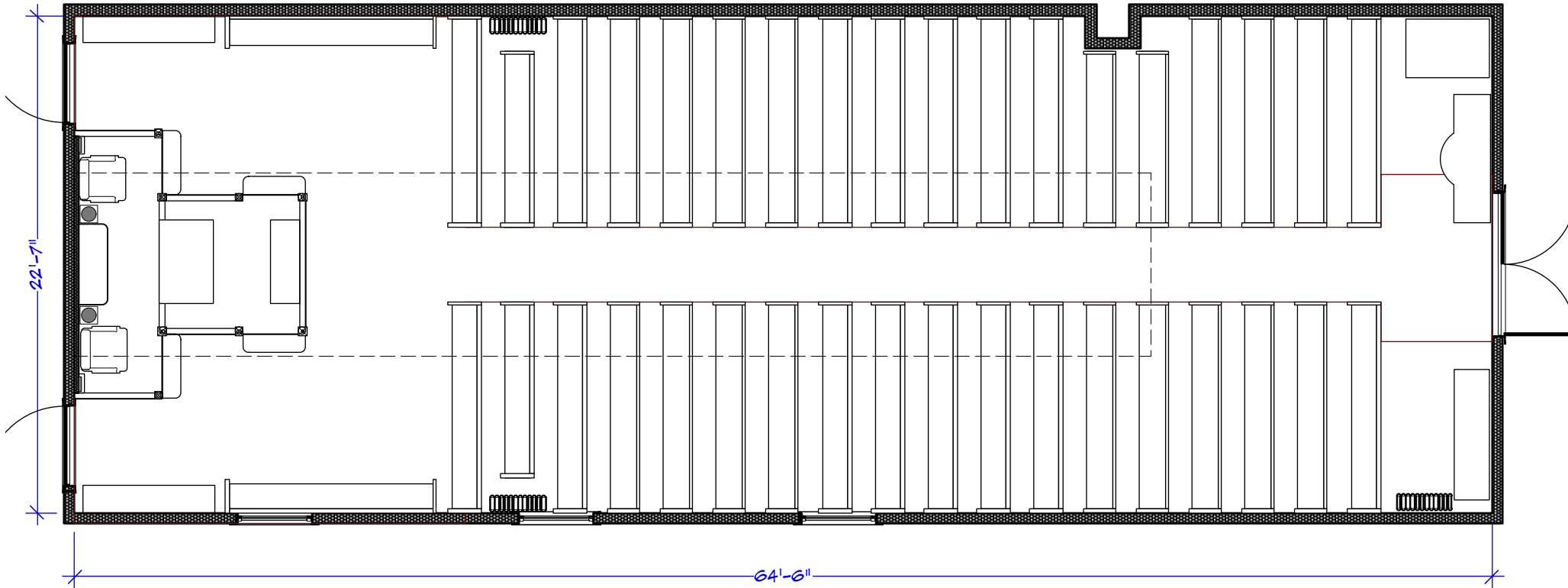
SCENE #:
 1, 15
 LOCATION:
 20 PLUM BEACH PT 11050


SHOOT DATE:
 6/4/19 - 6/5/19
 SCALE:
 1:150

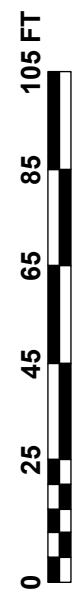
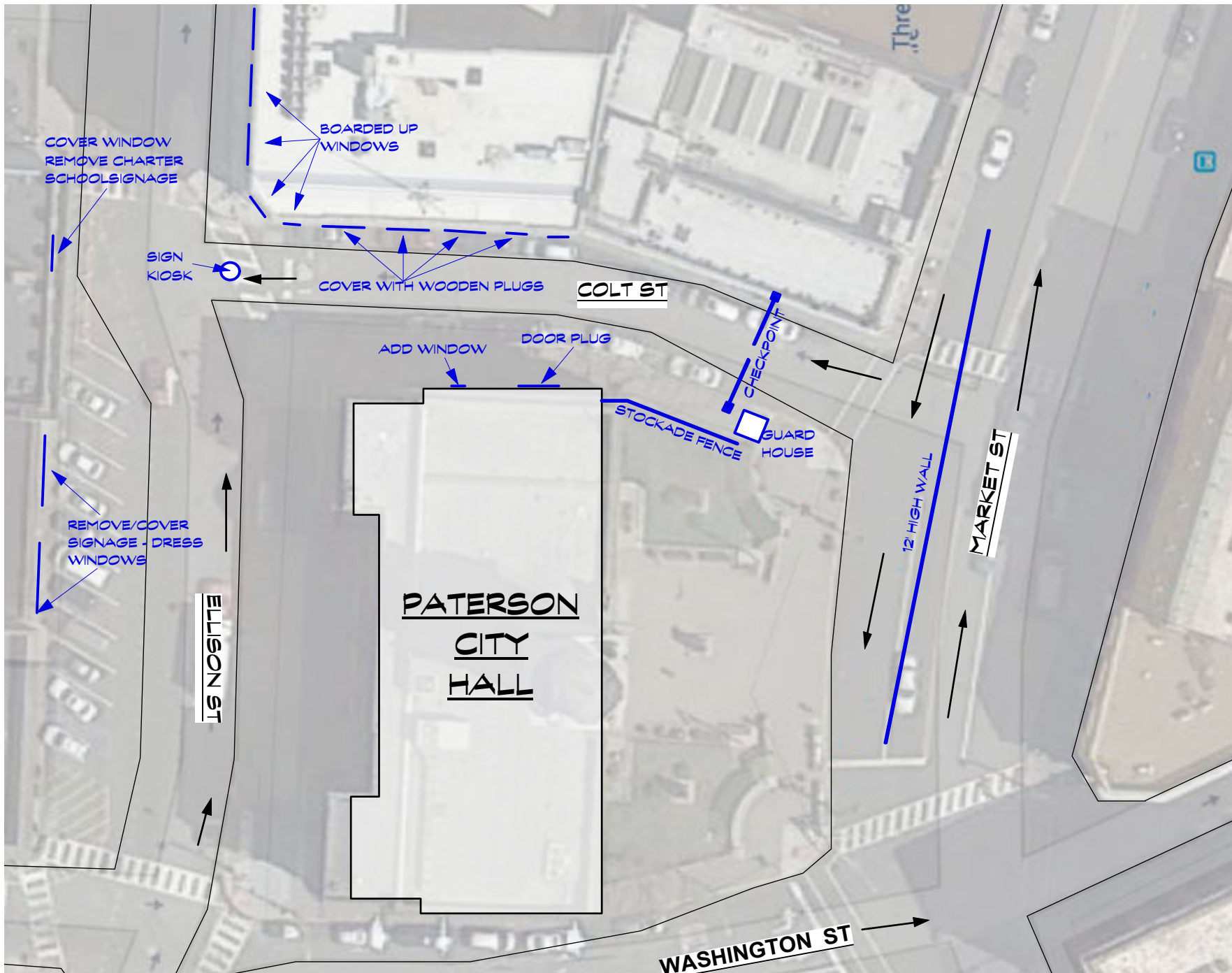
SET #:
 115
 EPISODE:
 101

**BIFF'S HOUSE
 EXT**

MIDDLE CEILING +22'
 SIDE CEILING +11'



	PROD. DESIGNER: CURT BEECH ART DIRECTOR: MARCI MUDD	DRAWING: DIRECTORS PLAN	SHOOT DATE: 03/19/2019	SET #: 122	DATE DRAWN: 3/1/2019	TEMPLE ISRAEL
	DRAWING BY: M FAHRER	LOCATION: 15 OLD BROADWAY 10027	SCALE: 80:1	SCENE #: xx	REVISED: XX/XX/2018	



LODZ GHETTO
NO SCALE



PROD. DESIGNER: CURT BEECH
ART DIRECTOR: MARCI MUDD

DRAWING BY: M MUDD

DRAWING:
DIRECTORS PLAN

LOCATION:
PATERSON, NJ

SHOOT DATE:
03/29/2019

SCALE:
NO SCALE

SET #:
124

SCENE #:
101.20

DATE DRAWN:
03/10/19

REVISED:
XX

LODZ GHETTO



CEILING @ 8'-0"

ELEVATORS

ENTRANCE

BATHROOM

OFF CAMERA

OFF CAMERA

OFF CAMERA

OFF CAMERA

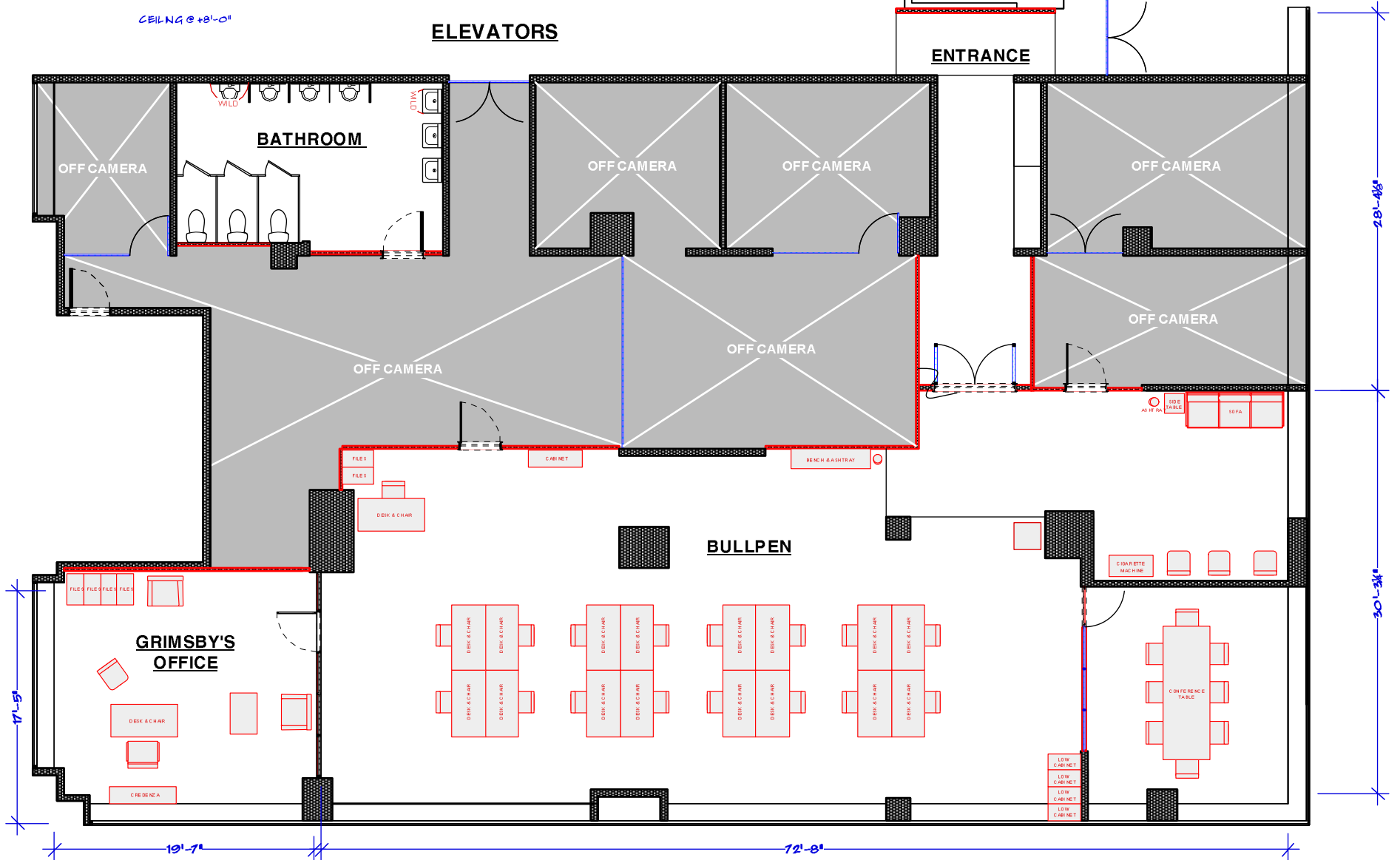
OFF CAMERA

OFF CAMERA

OFF CAMERA

BULLPEN

GRIMSBY'S OFFICE



PROD. DESIGNER: CURT BEECH
 ART DIRECTOR: MARCI MUDD
 DRAWING BY: M. FAHRER

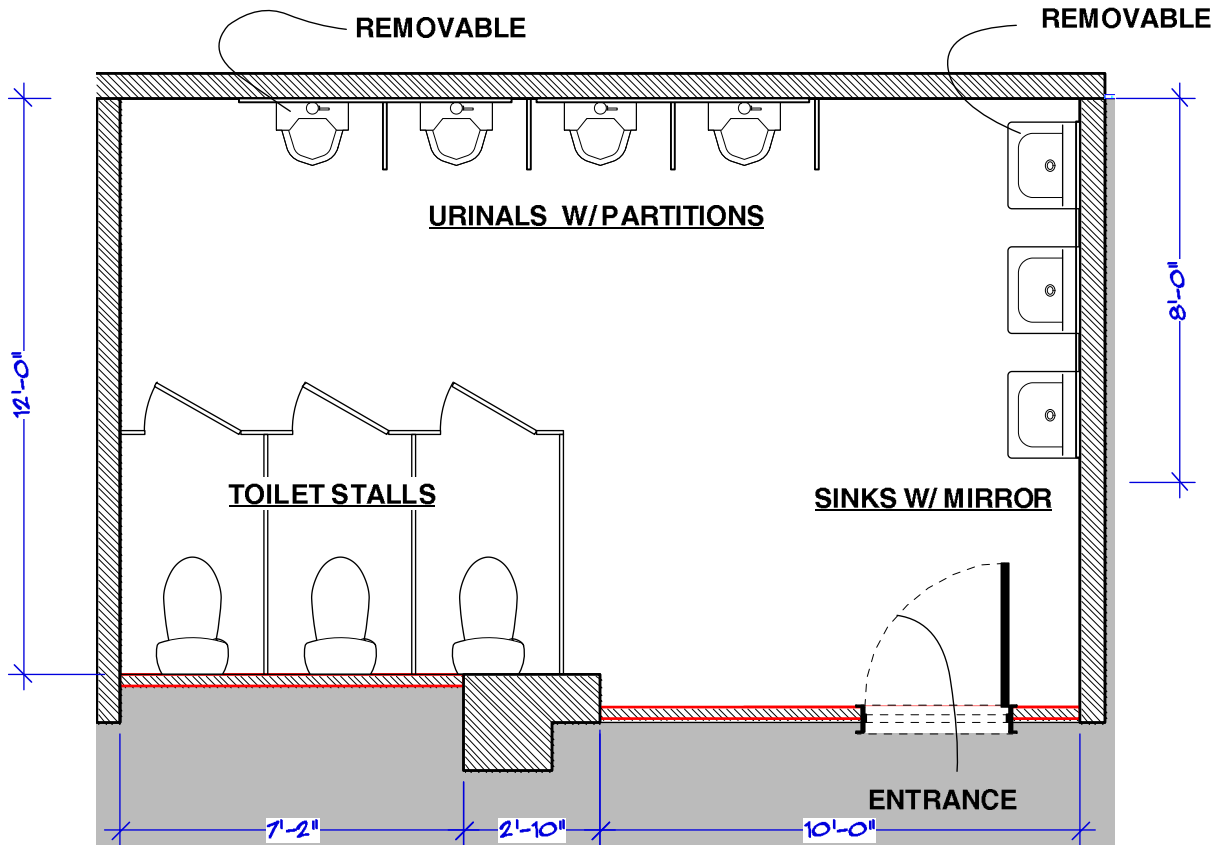
SCENE #:
29
 LOCATION:
405 PARK AVE 10022

SHOOT DATE:
DAY#5 3/22/19
 SCALE:
3/32"=1'-0"

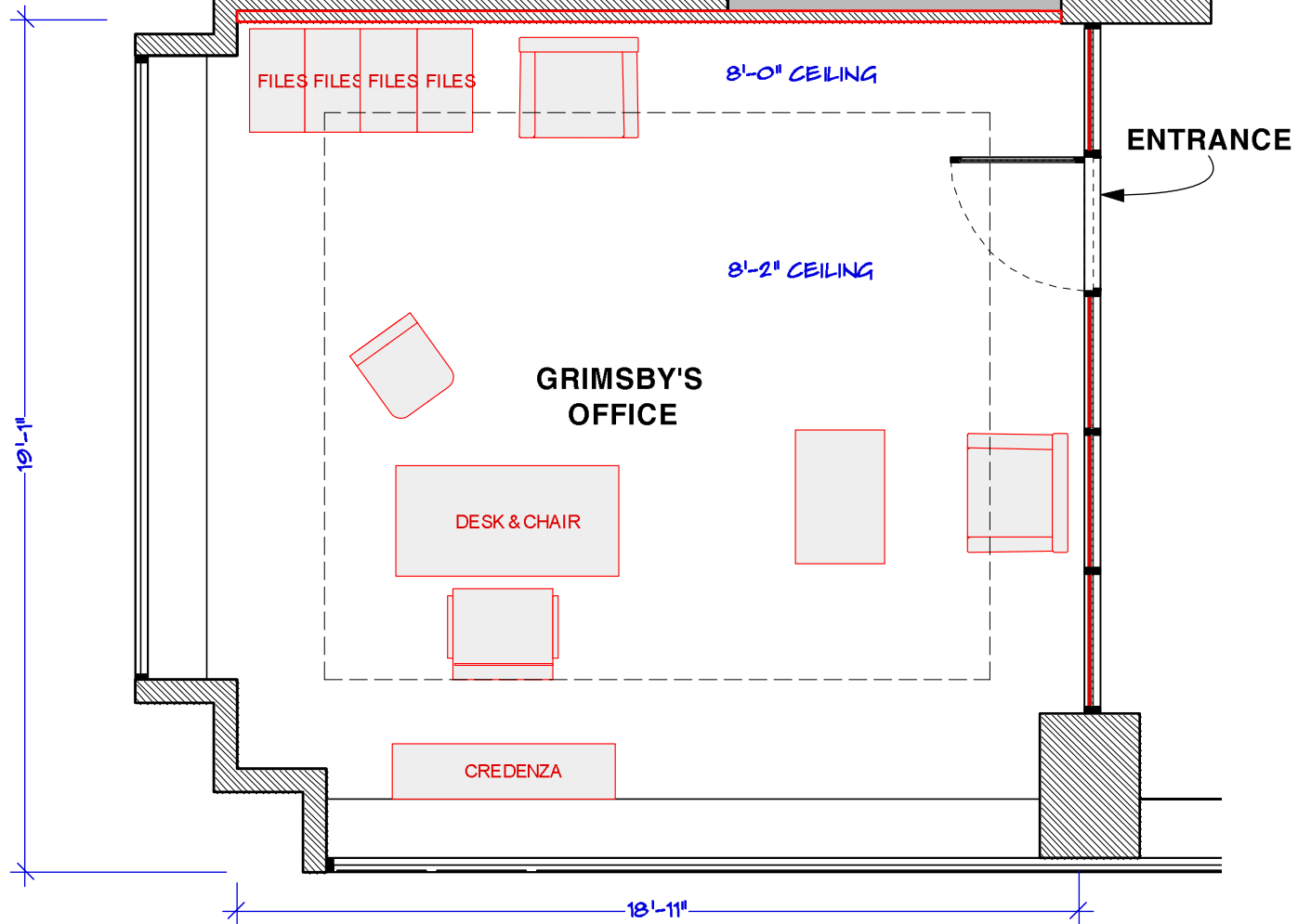
SET #:
133
 EPISODE:
101

FBI HQ

CEILING +8'



PROD. DESIGNER: CURT BEECH ART DIRECTOR: MARCI MUDD	SCENE #: 28	SHOOT DATE: DAY#5 3/22/19	SET #: 131	FBI BATHROOM
DRAWING BY: M. FAHRER	LOCATION: 405 PARK AVE 10022	SCALE: 1/4"=1'-0"	EPISODE: 101	



PROD. DESIGNER: CURT BEECH
ART DIRECTOR: MARCI MUDD

DRAWING BY: M. FAHRER

SCENE #:
30

LOCATION:
405 PARK AVE 10022

SHOOT DATE:
DAY # 5

SCALE:
1/4"=1'-0"

SET #:
133

EPISODE:
101

**GRIMSBY'S
OFFICE**