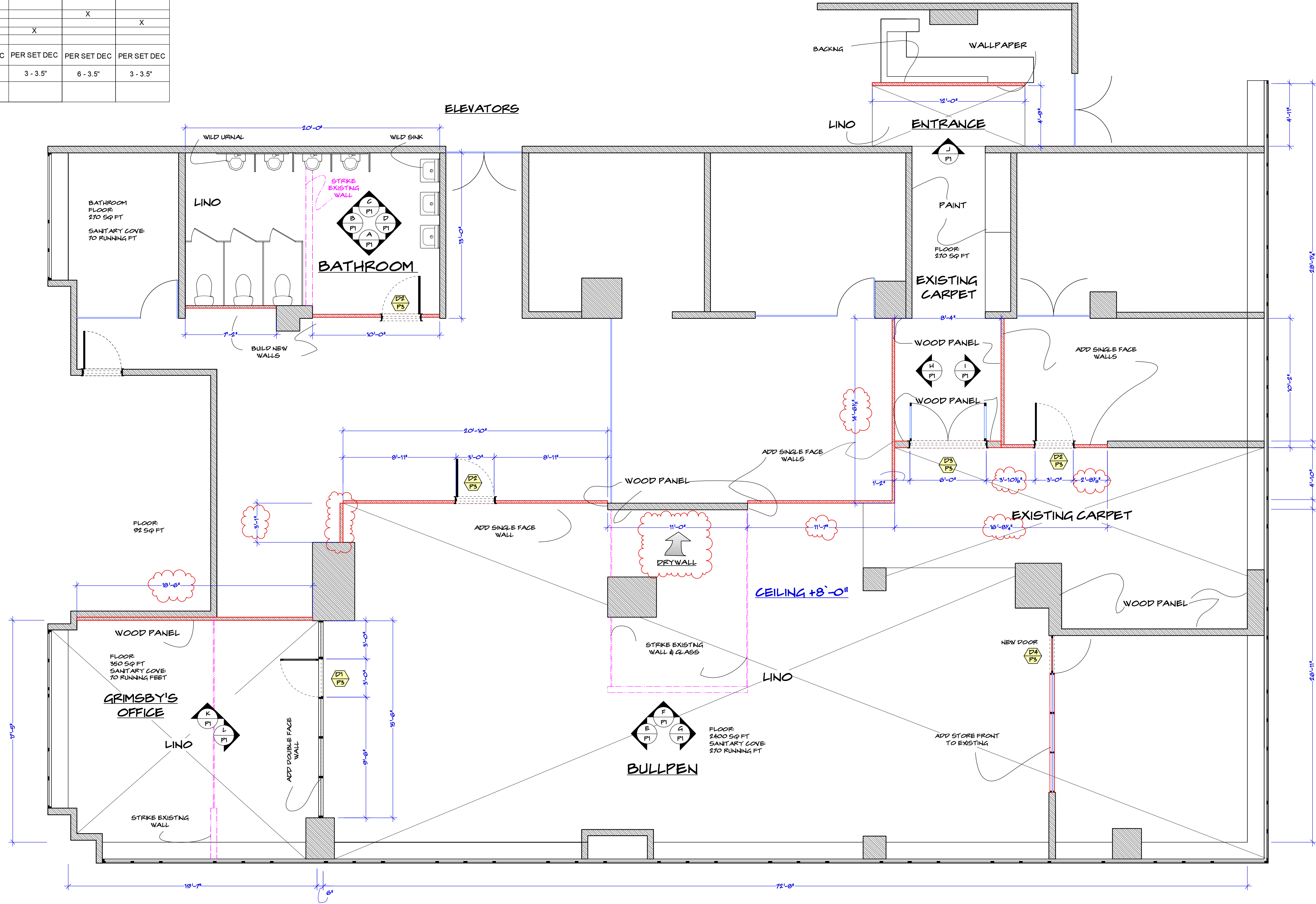
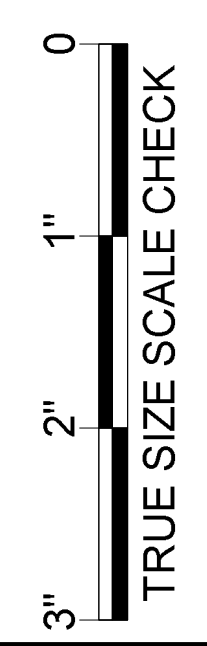


**DOOR SCHEDULE**

DOOR NUMBER	D1	D2	D3	D4
QTY	1	3	1	1
TYPE	OFFICE	PASSAGE	ENTRANCE	OFFICE
ELEVATION				
DOOR OPENING SIZE	36 X 80	36 X 80	72 X 80	35.75 X 80
DOOR MATERIAL	METAL/ GLASS	WOOD	METAL/ GLASS	METAL/ GLASS
FINISH	ANODIZED	STAIN	ANODIZED	ANODIZED
DETAIL SHEET	3	3	3	3
HARDWARE STYLE				
ENTRY			X	
PRIVACY	X			X
PASSAGE		X		
DUMMY				
HARDWARE FINISH	PER SET DEC	PER SET DEC	PER SET DEC	PER SET DEC
HINGE QTY	3 - 3.5"	3 - 3.5"	6 - 3.5"	3 - 3.5"
THRESHOLD				



FBI MANHATTAN HQ TECHNICAL PLAN  
SCALE: 1/4" = 1'-0"



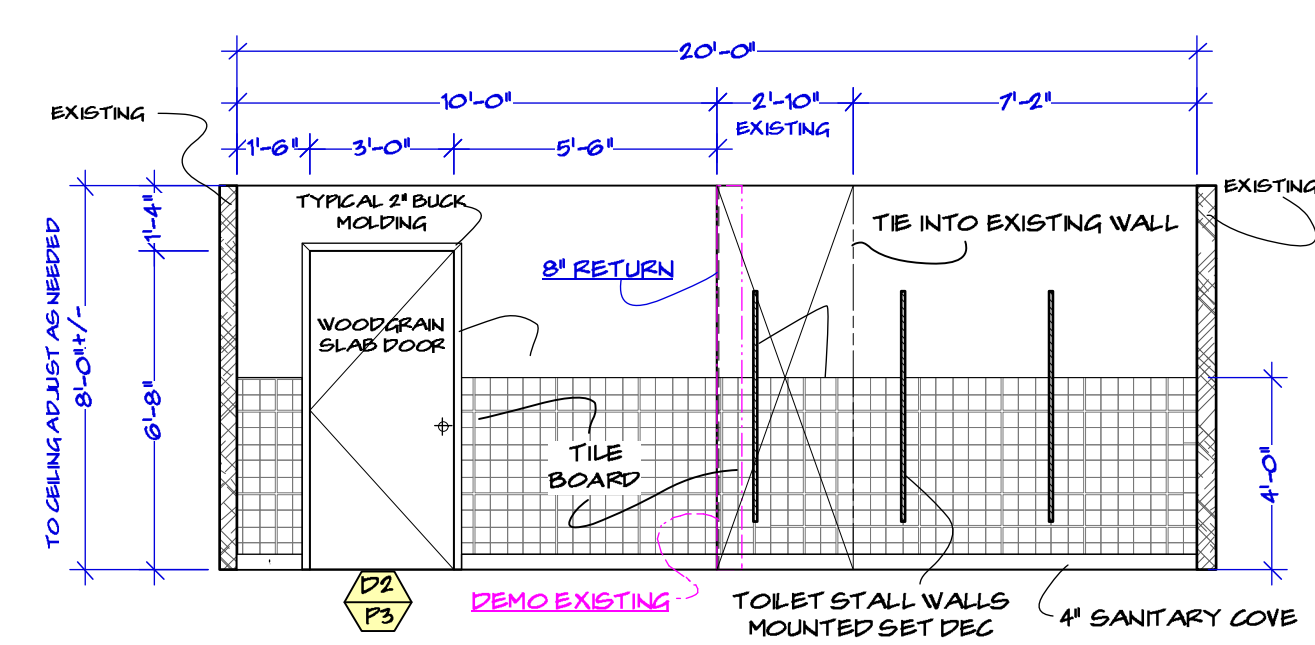
TRUE SIZE SCALE CHECK

101-131-133\_FBI Manhattan HQ Elevators\_405 Park Ave\_3-8-19.rvt

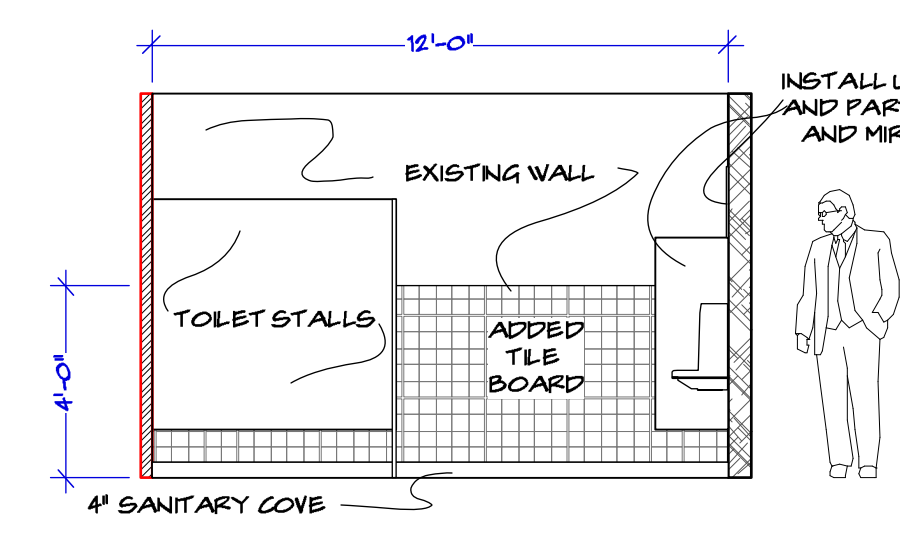


RELEASED 03/08/2019

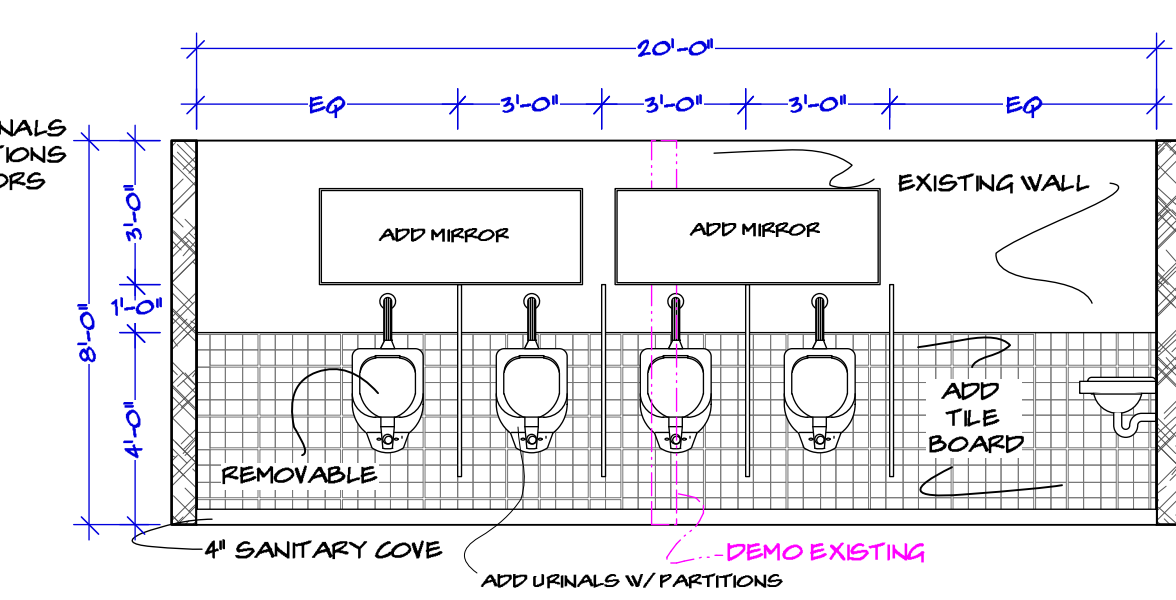
Episode: 101	Set Name & Description: FBI MANHATTAN HEADQUARTERS - TECHNICAL PLAN	Exec Producer: NIKKI TOSCANO	Producer: JERRY KUPFER	Drawn by: M. FAHRER
Set #: 131-133	Director: VARIOUS	Line Producer: BILL SELL	UPM: BILL SELL	Drawing Date: 3/8/2019
Scale: 1/4" = 1'-0"	Location: 405 Park Ave 10022	Address: STEINER STUDIO, 15 WASHINGTON AVE	Art Director: MARCI MUDD	Shoot Date: 03/20/2019
		Prod Designer: CURT BEECH	Const. Coordinator: NILES NORTON	
		Set Decorator: SUSAN MARSHAL		



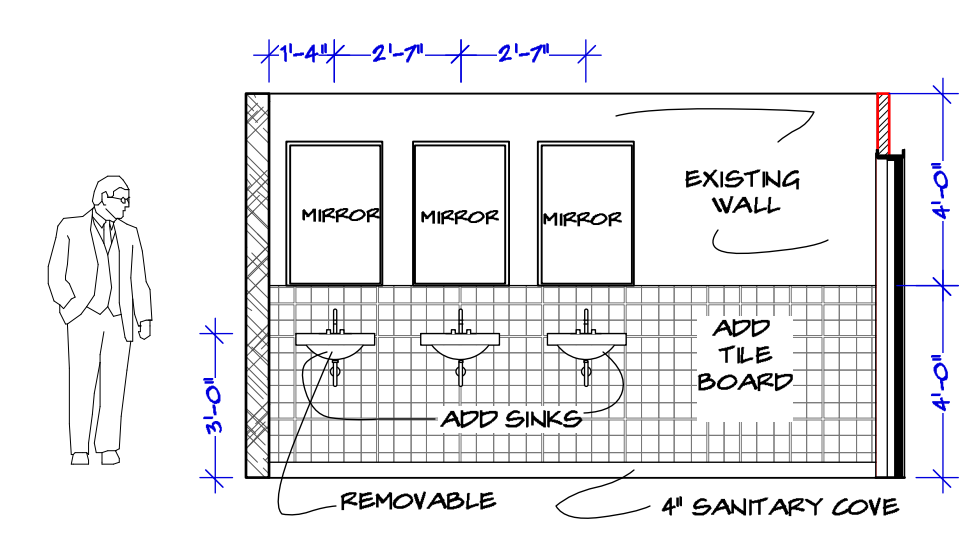
A FBI BATHROOM WALL SET #131  
SCALE: 1/4" = 1'-0"



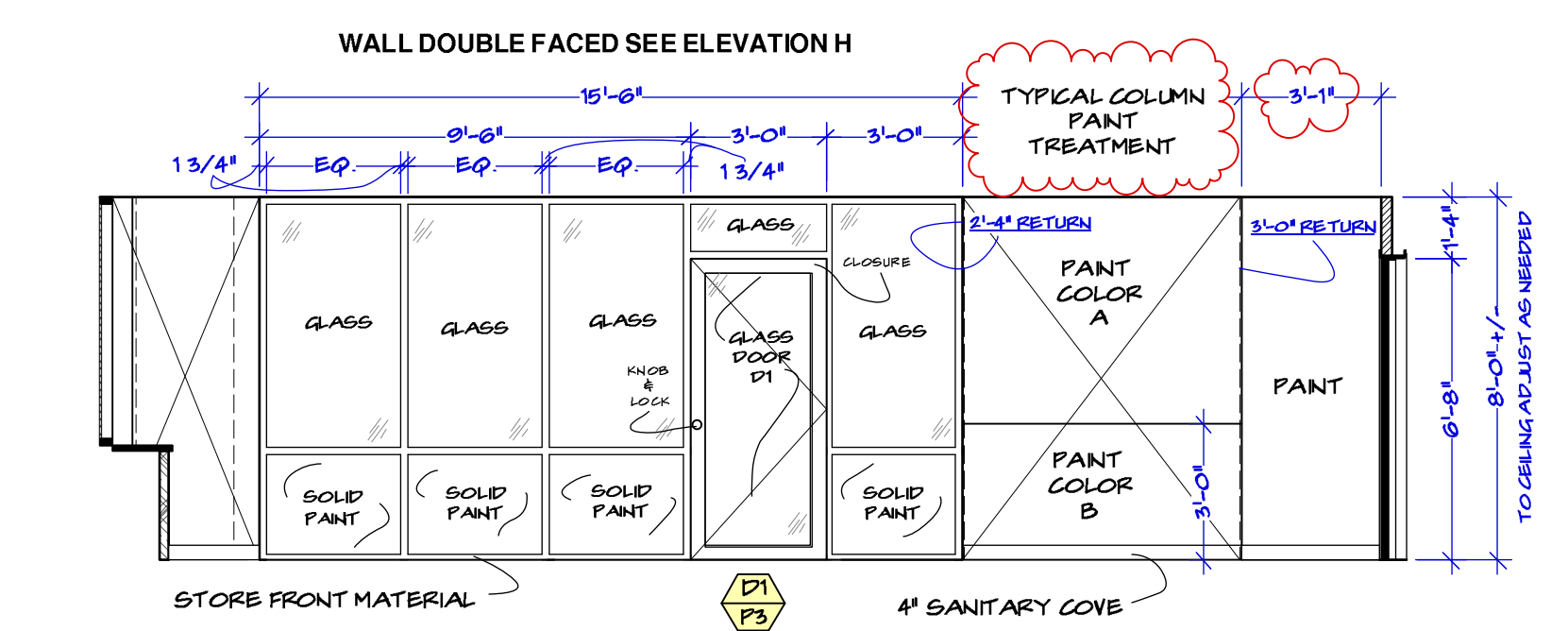
B BATHROOM WALL B SET #131  
SCALE: 1/4" = 1'-0"



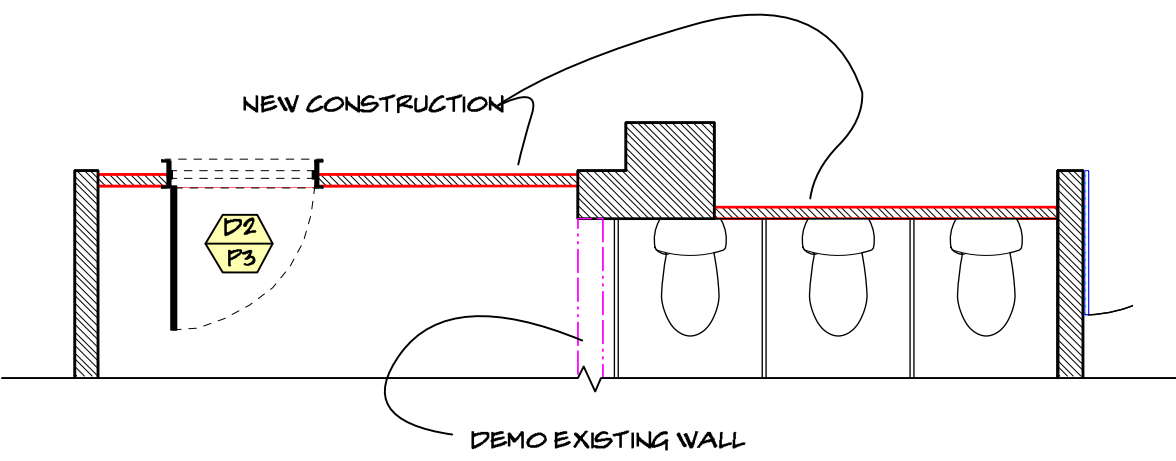
C BATHROOM WALL C SET #131  
SCALE: 1/4" = 1'-0"



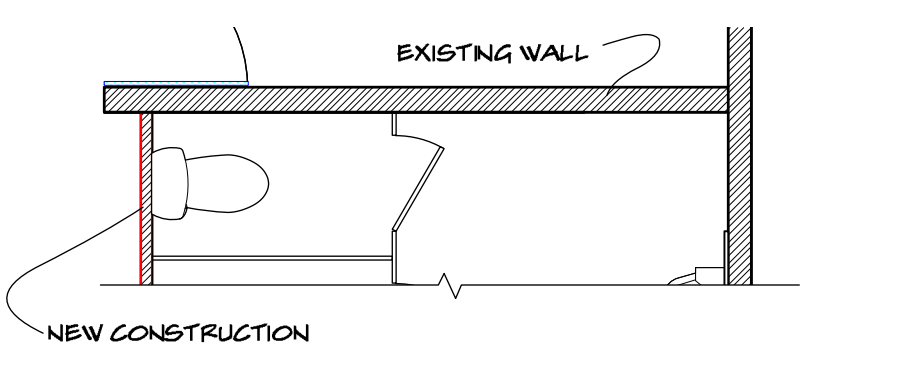
D BATHROOM WALL D SET #131  
SCALE: 1/4" = 1'-0"



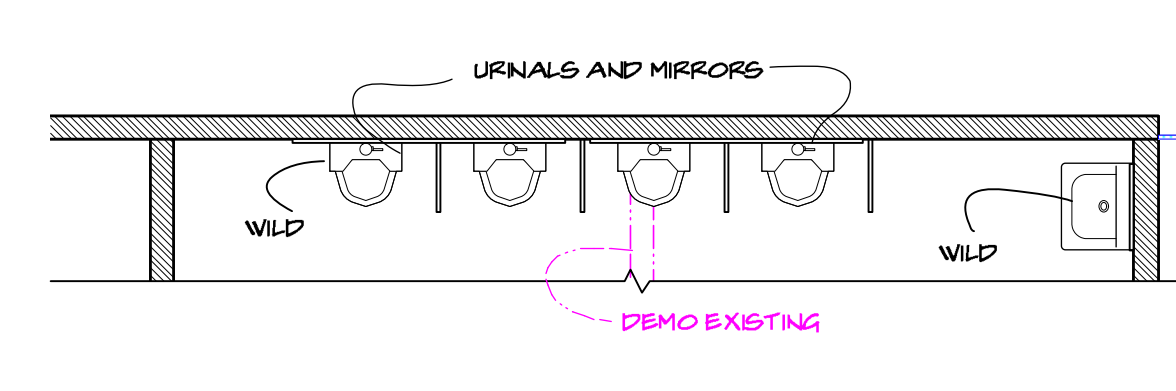
E BULLPEN NORTH SET #132  
SCALE: 1/4" = 1'-0"



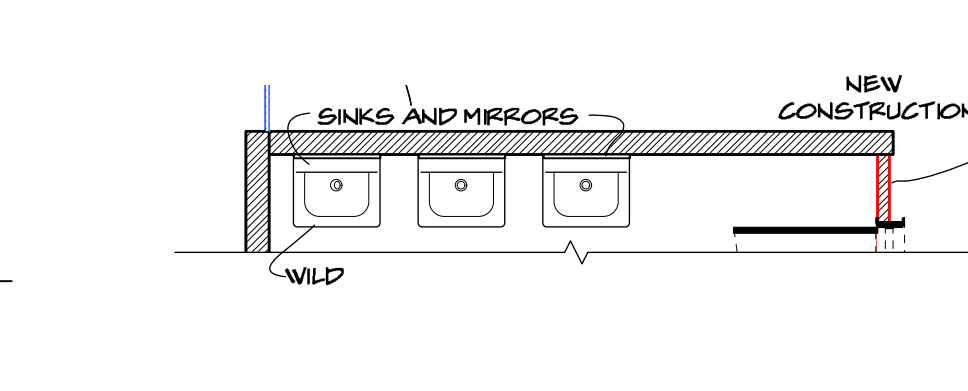
FBI BATHROOM PLAN #131  
SCALE: 1/4" = 1'-0"



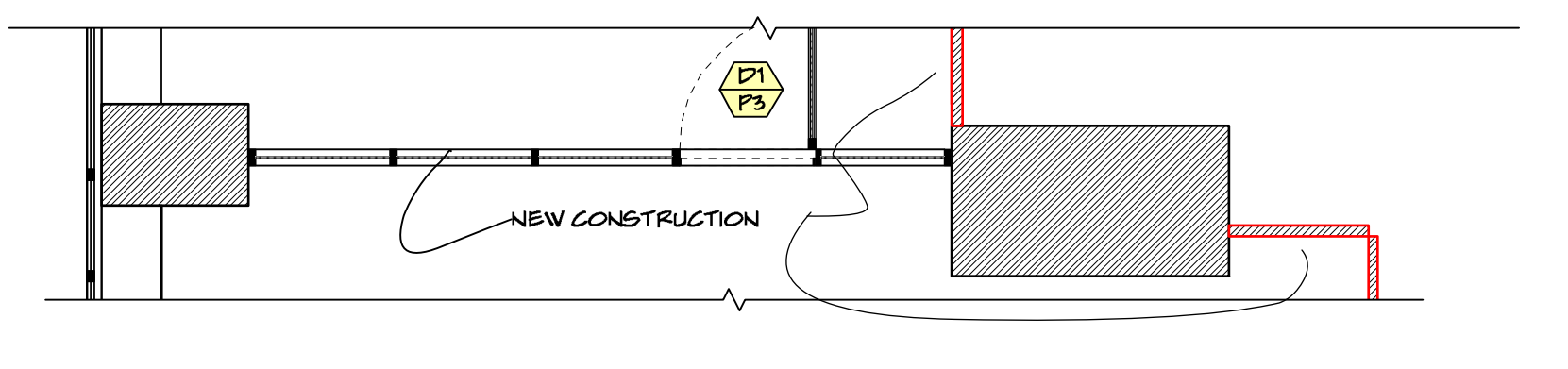
BATHROOM WALL B PLAN #131  
SCALE: 1/4" = 1'-0"



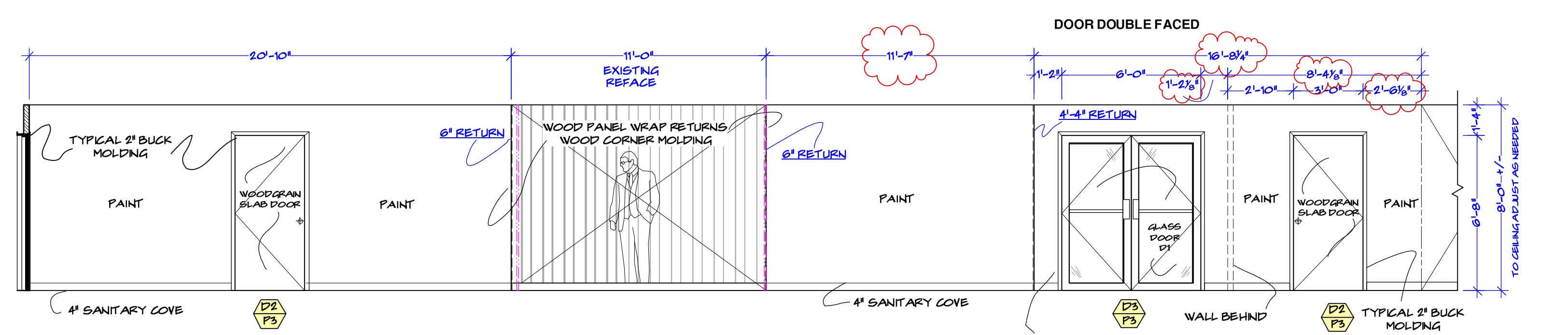
BATHROOM WALL C PLAN #131  
SCALE: 1/4" = 1'-0"



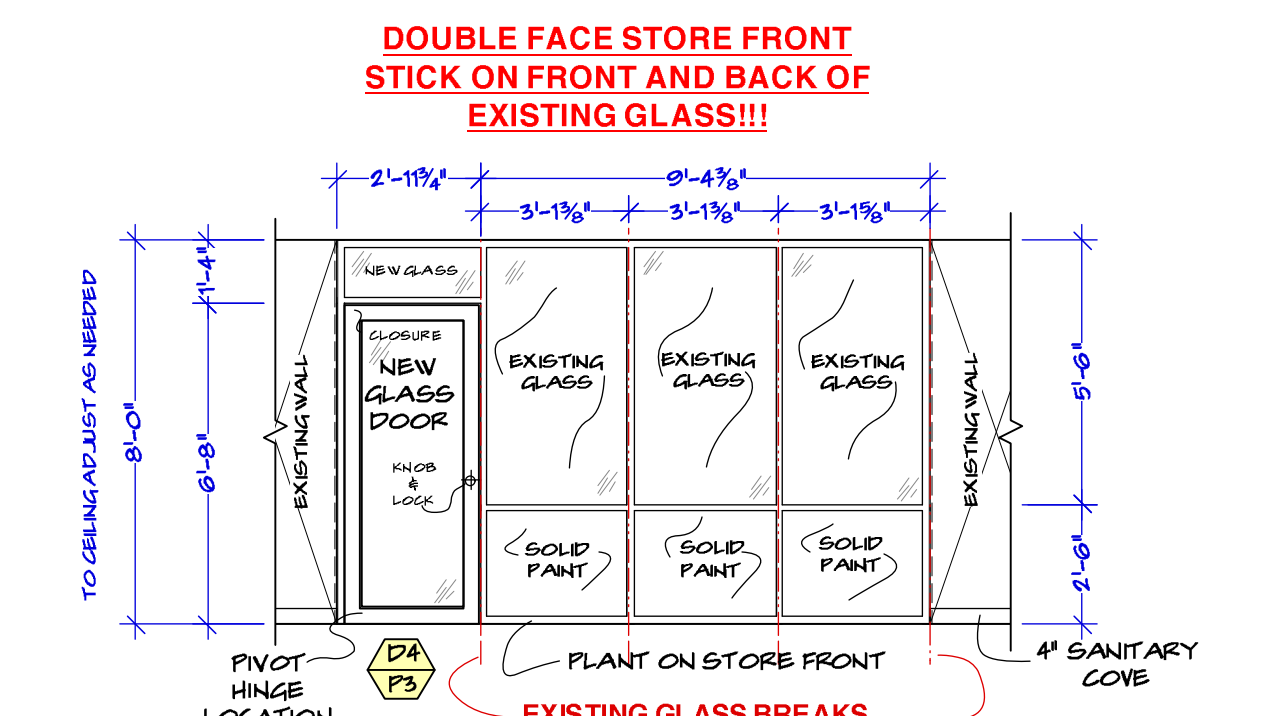
BATHROOM WALL D PLAN #131  
SCALE: 1/4" = 1'-0"



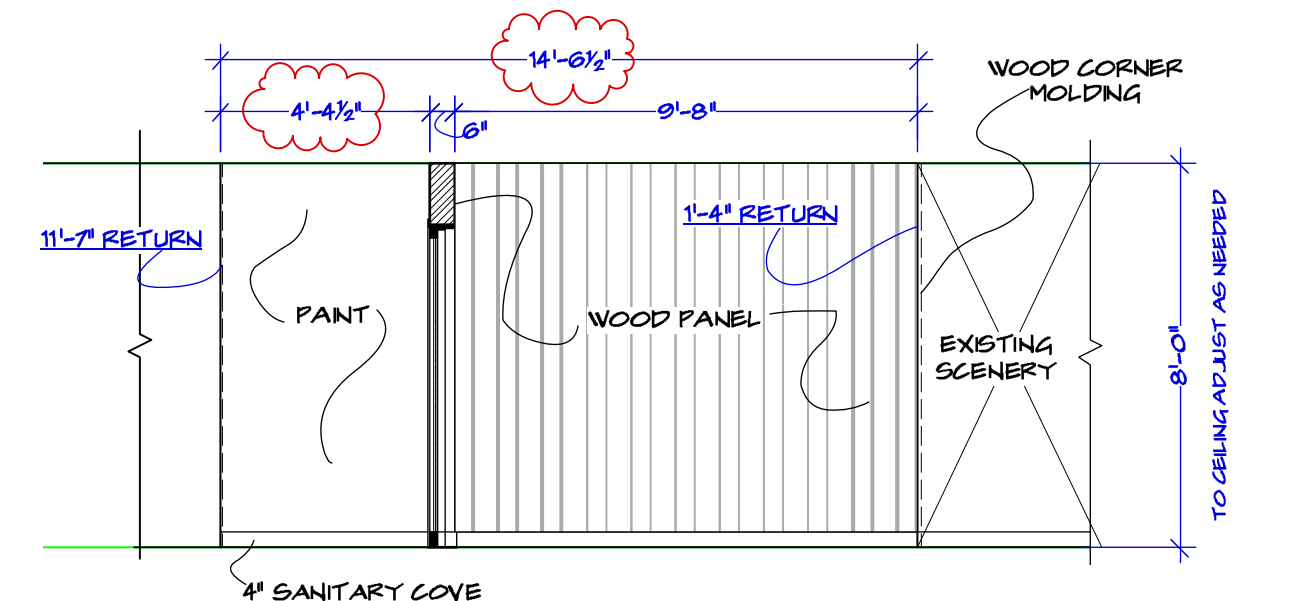
BULLPEN NORTH PLAN #132  
SCALE: 1/4" = 1'-0"



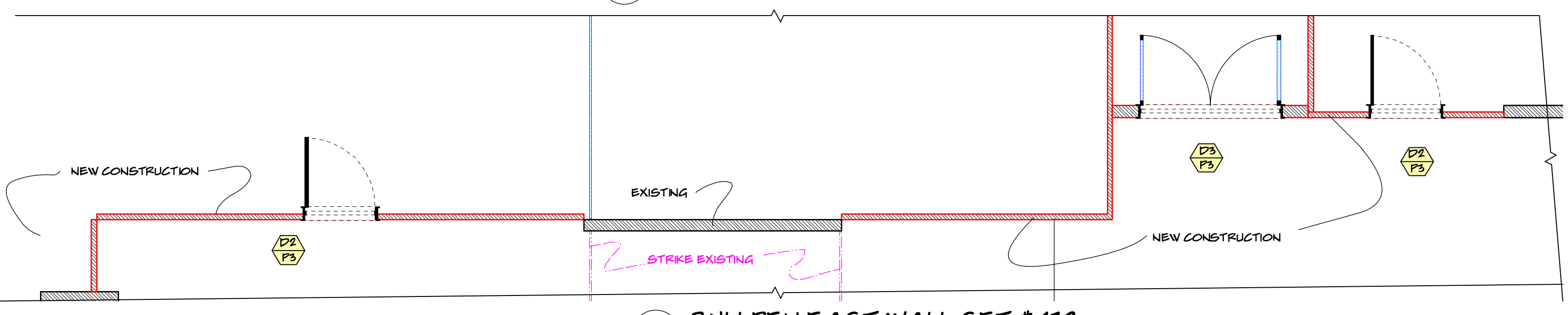
F BULL PEN EAST WALL SET #132  
SCALE: 1/4" = 1'-0"



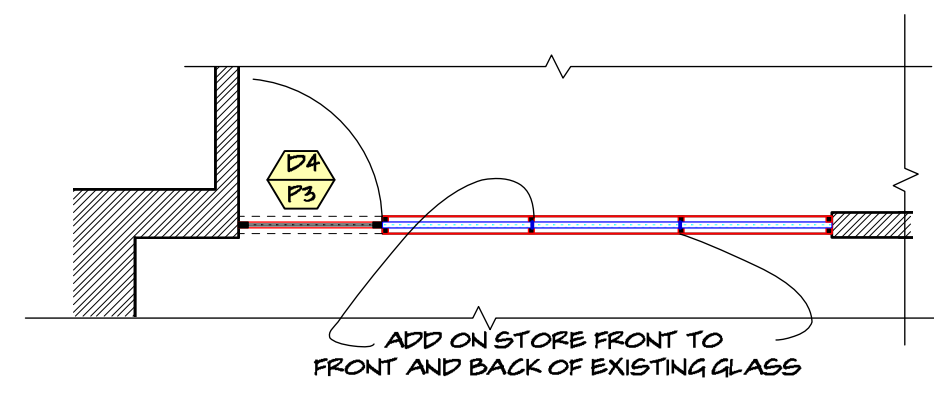
G BULLPEN STOREFRONT BACKING SET #132  
SCALE: 1/4" = 1'-0"



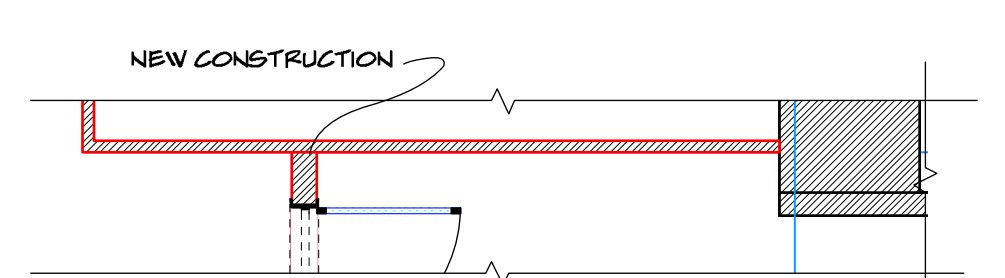
H ENTRANCE HALL SET #132  
SCALE: 1/4" = 1'-0"



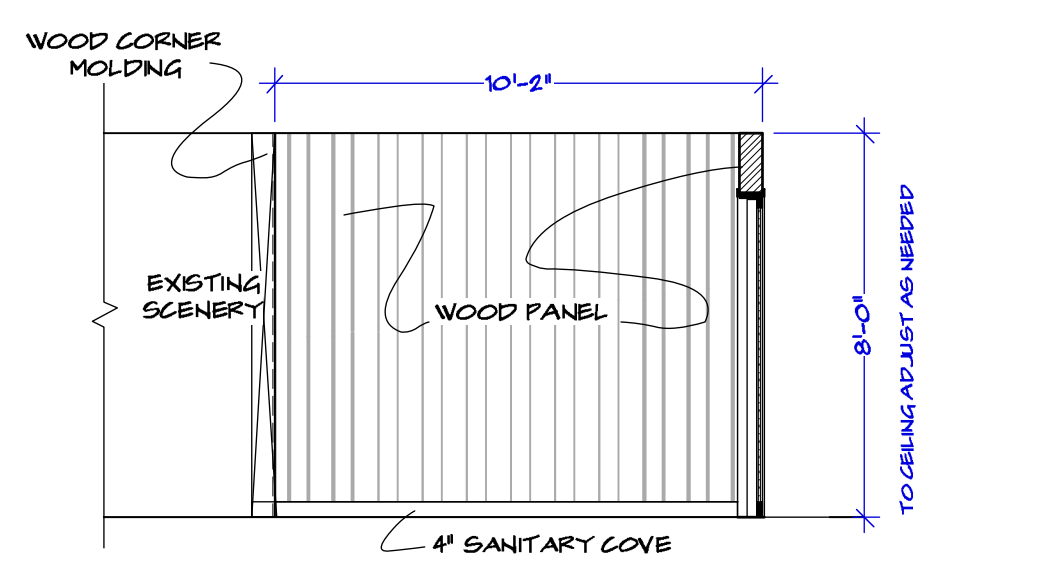
BULLPEN EAST WALL SET #132  
SCALE: 1/4" = 1'-0"



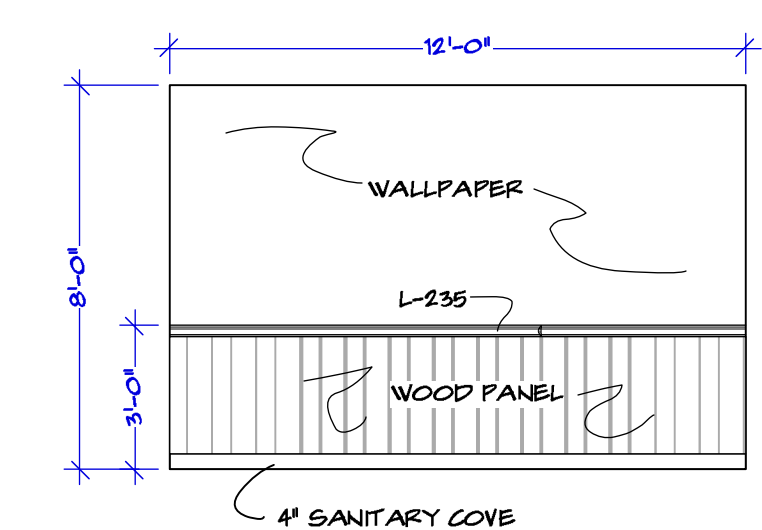
BULLPEN BACKING PLAN  
SCALE: 1/4" = 1'-0"



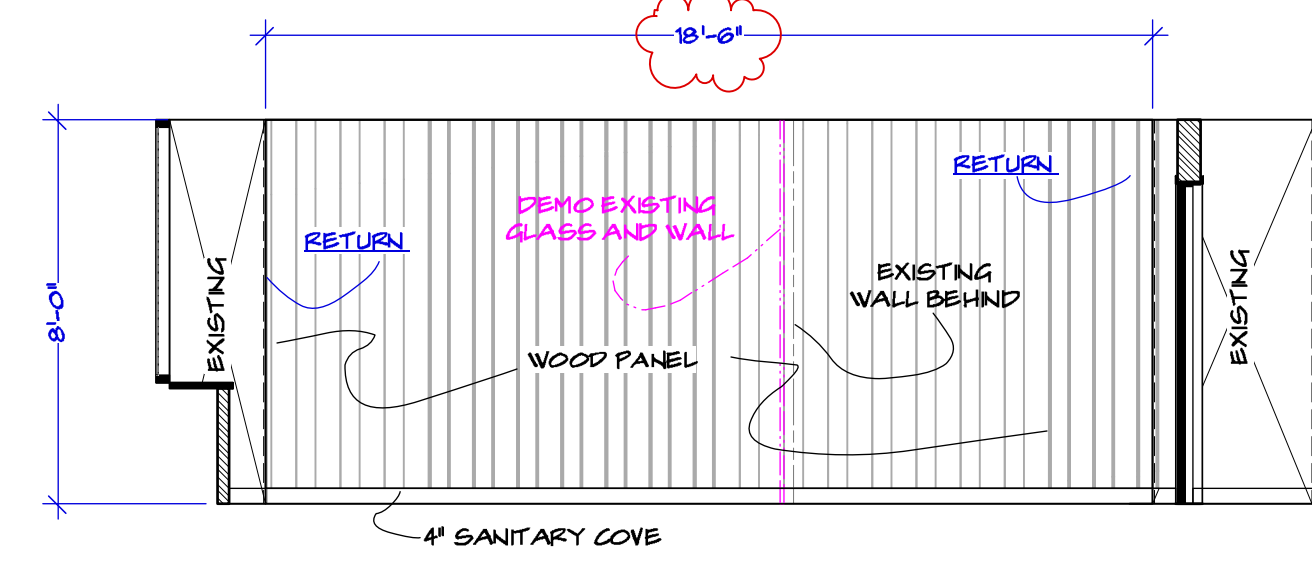
ENTRANCE HALL PLAN SET #132  
SCALE: 1/4" = 1'-0"



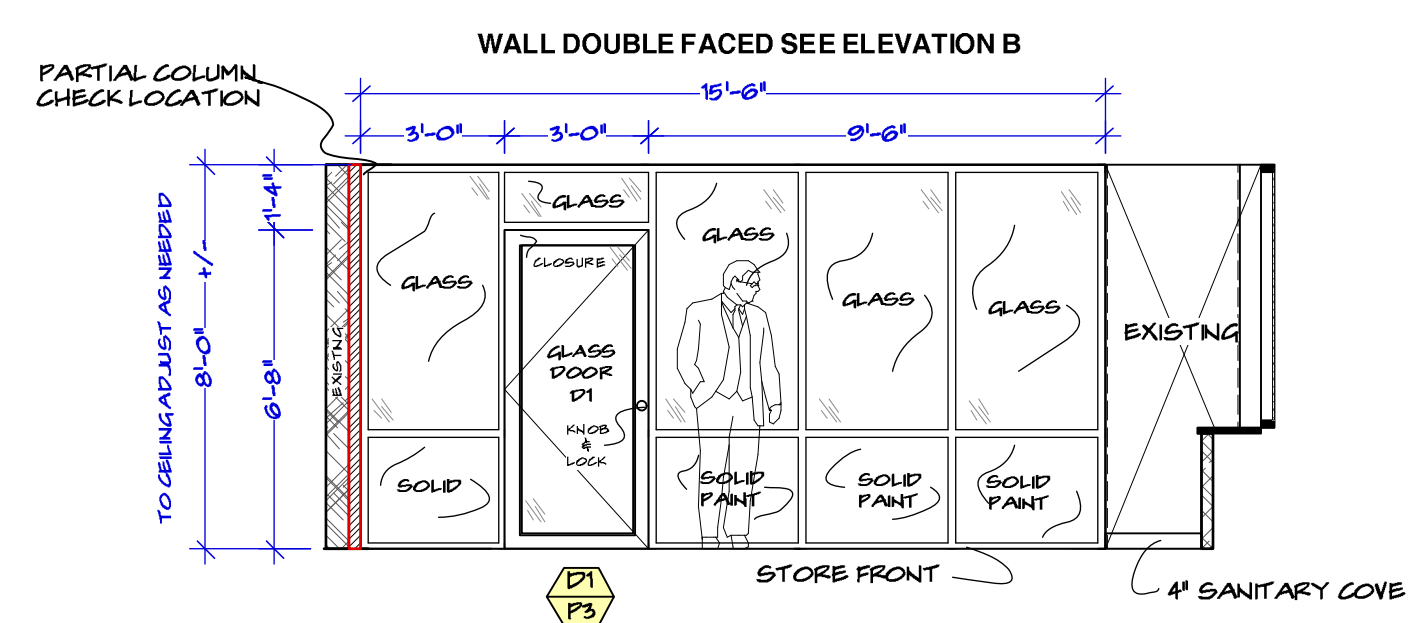
I ENTRANCE HALL SET #132  
SCALE: 1/4" = 1'-0"



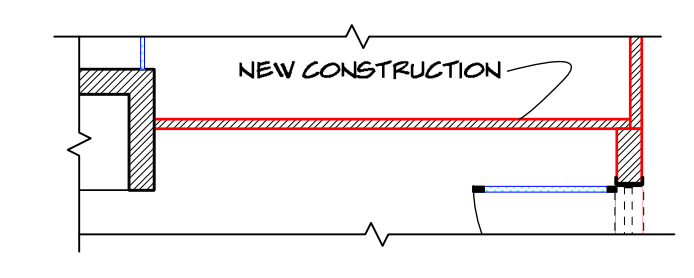
J ENTRANCE BACKING SET #132  
SCALE: 1/4" = 1'-0"



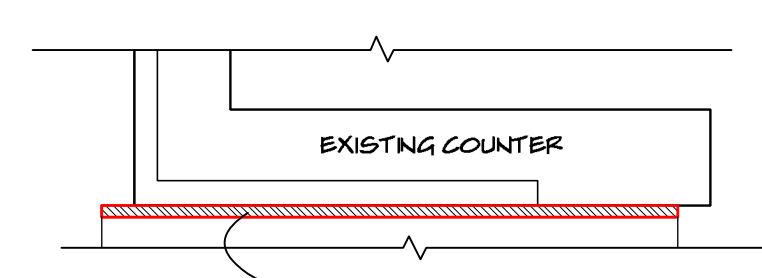
K GRIMSBY'S OFFICE EAST WALL SET #133  
SCALE: 1/4" = 1'-0"



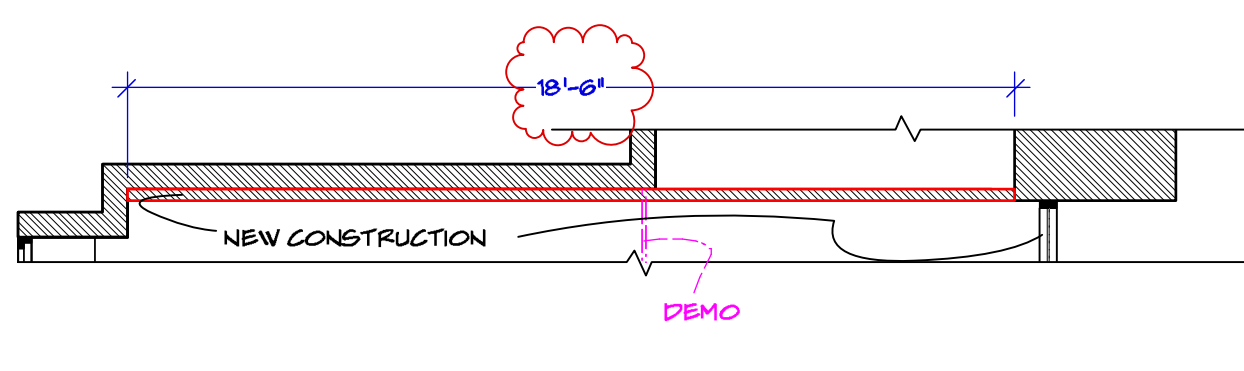
L GRIMSBY'S OFFICE ENTRANCE SET #133  
SCALE: 1/4" = 1'-0"



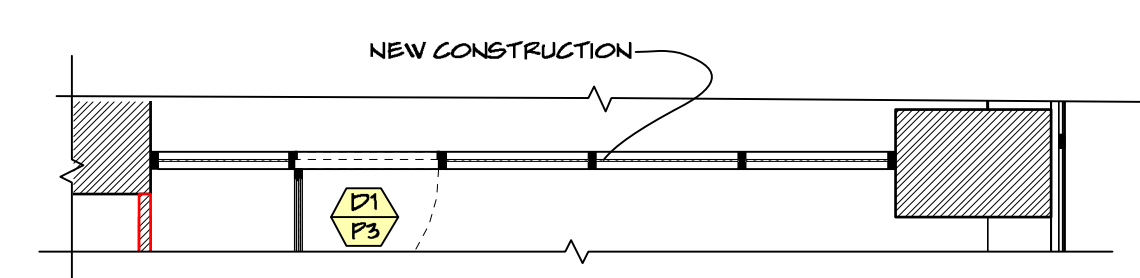
ENTRANCE HALL PLAN SET #132  
SCALE: 1/4" = 1'-0"



ENTRANCE BACKING PLAN SET #132  
SCALE: 1/4" = 1'-0"



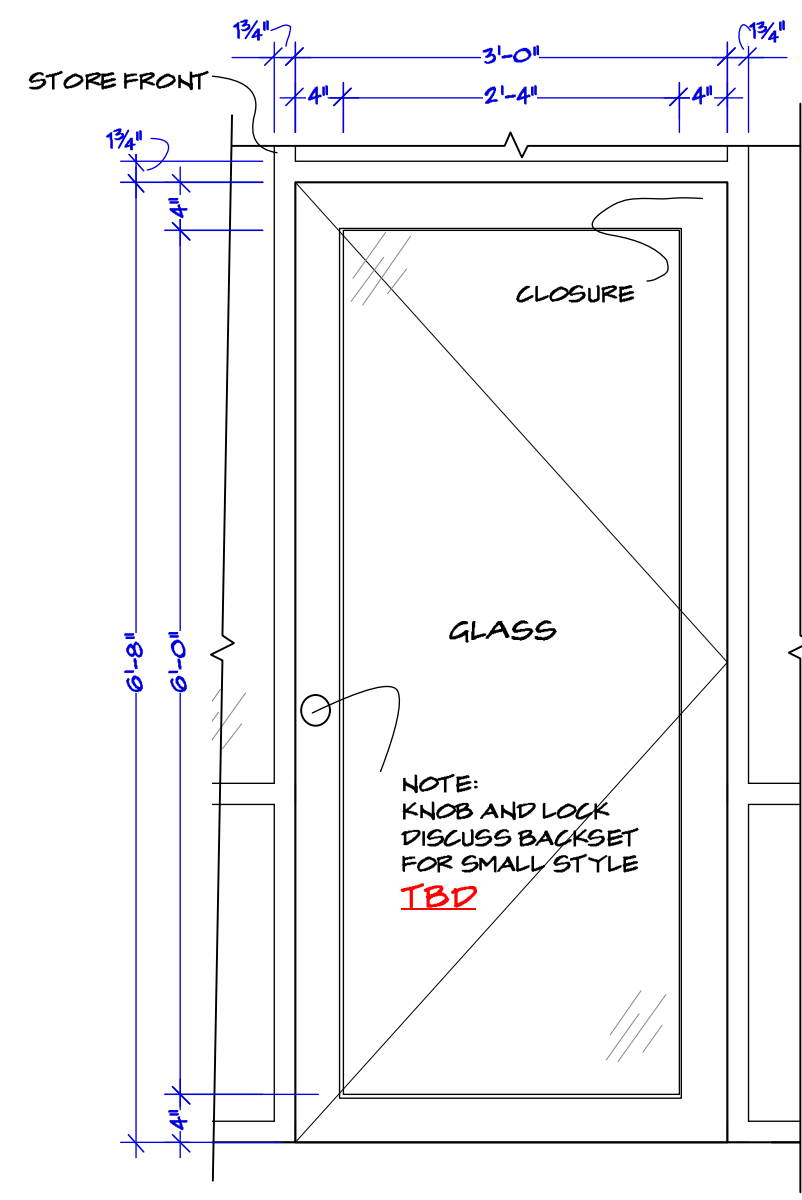
GRIMSBY EAST WALL PLAN SET #133  
SCALE: 1/4" = 1'-0"



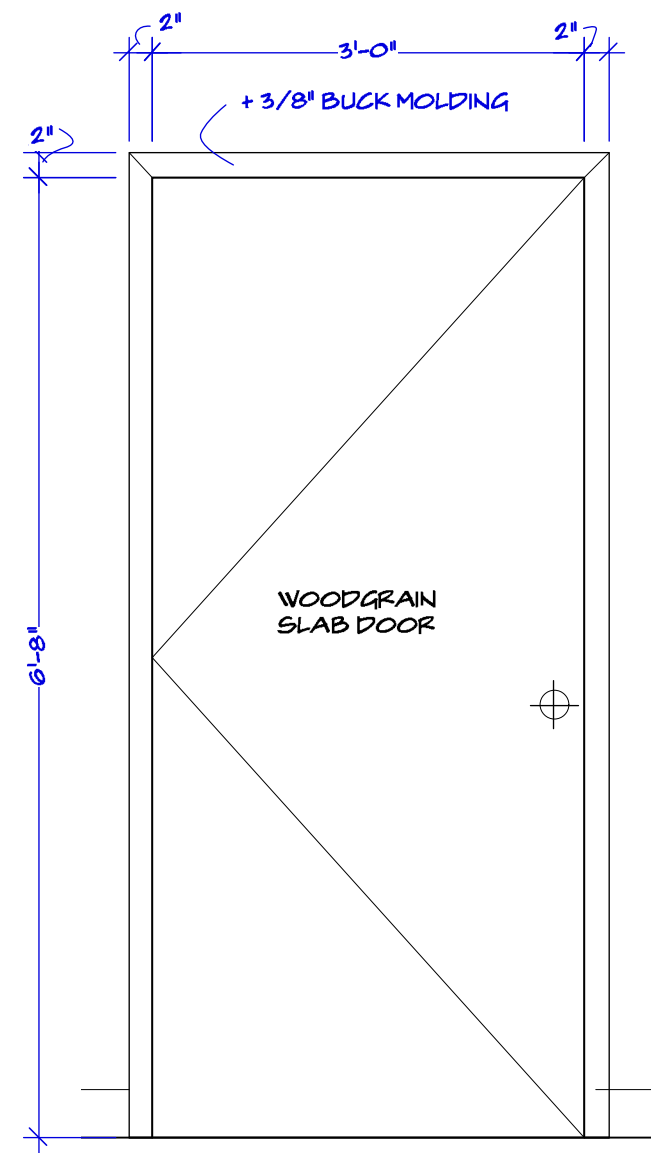
GRIMSBY'S OFFICE ENTRANCE SET #133  
SCALE: 1/4" = 1'-0"



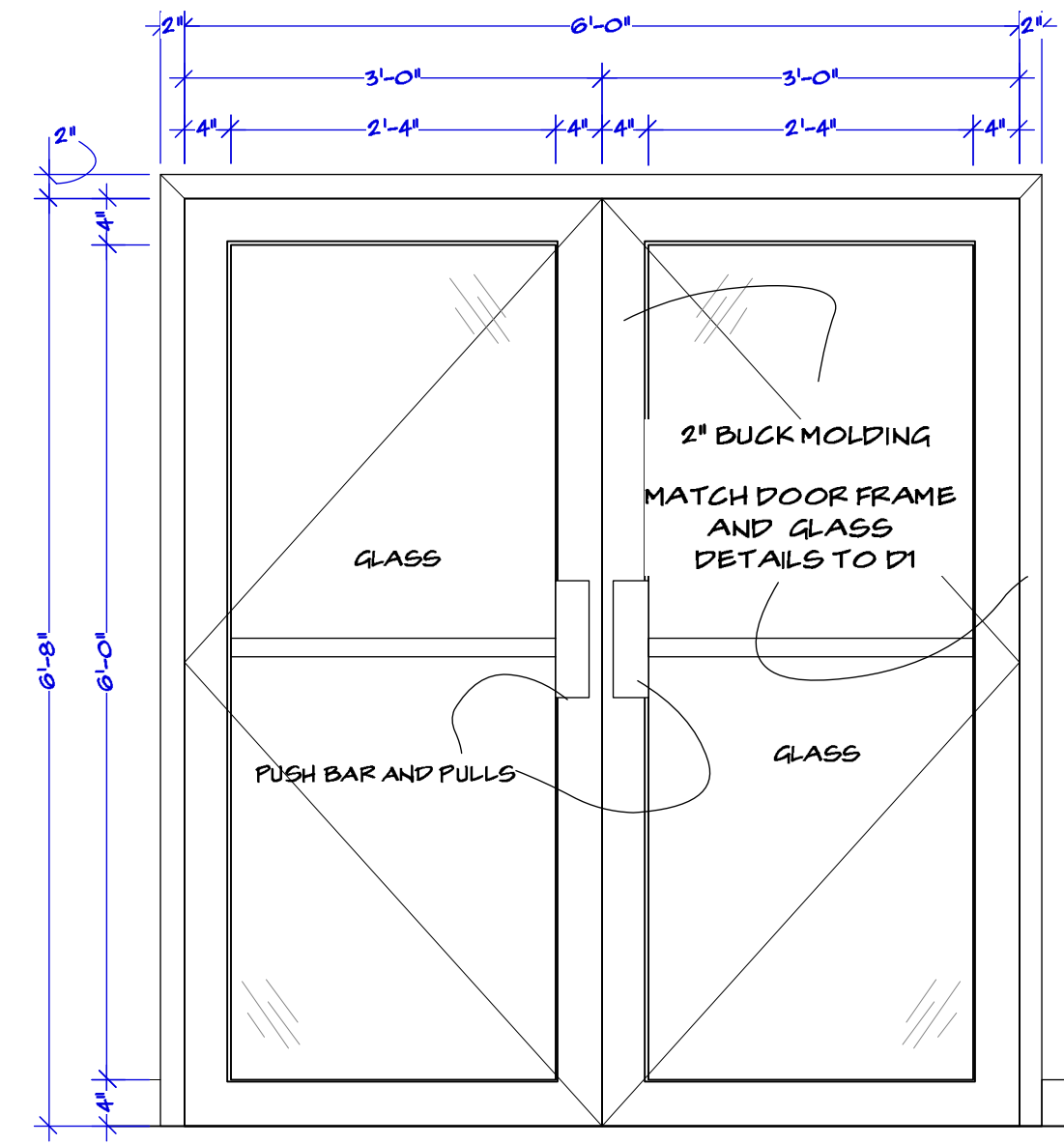
GLASS DOOR REFERENCE



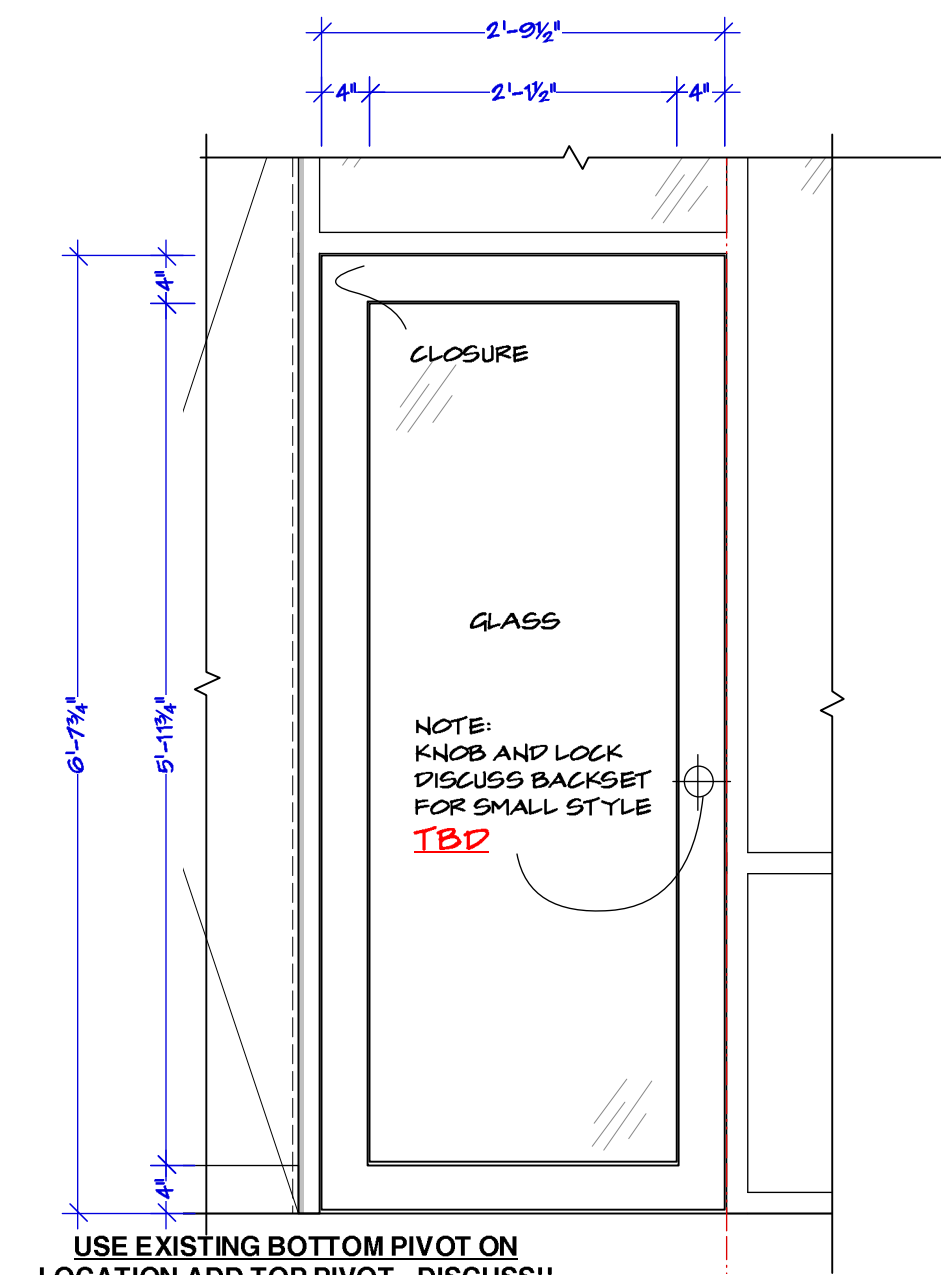
D1 DOOR 1 DETAIL  
SCALE: 3/4" = 1'-0"



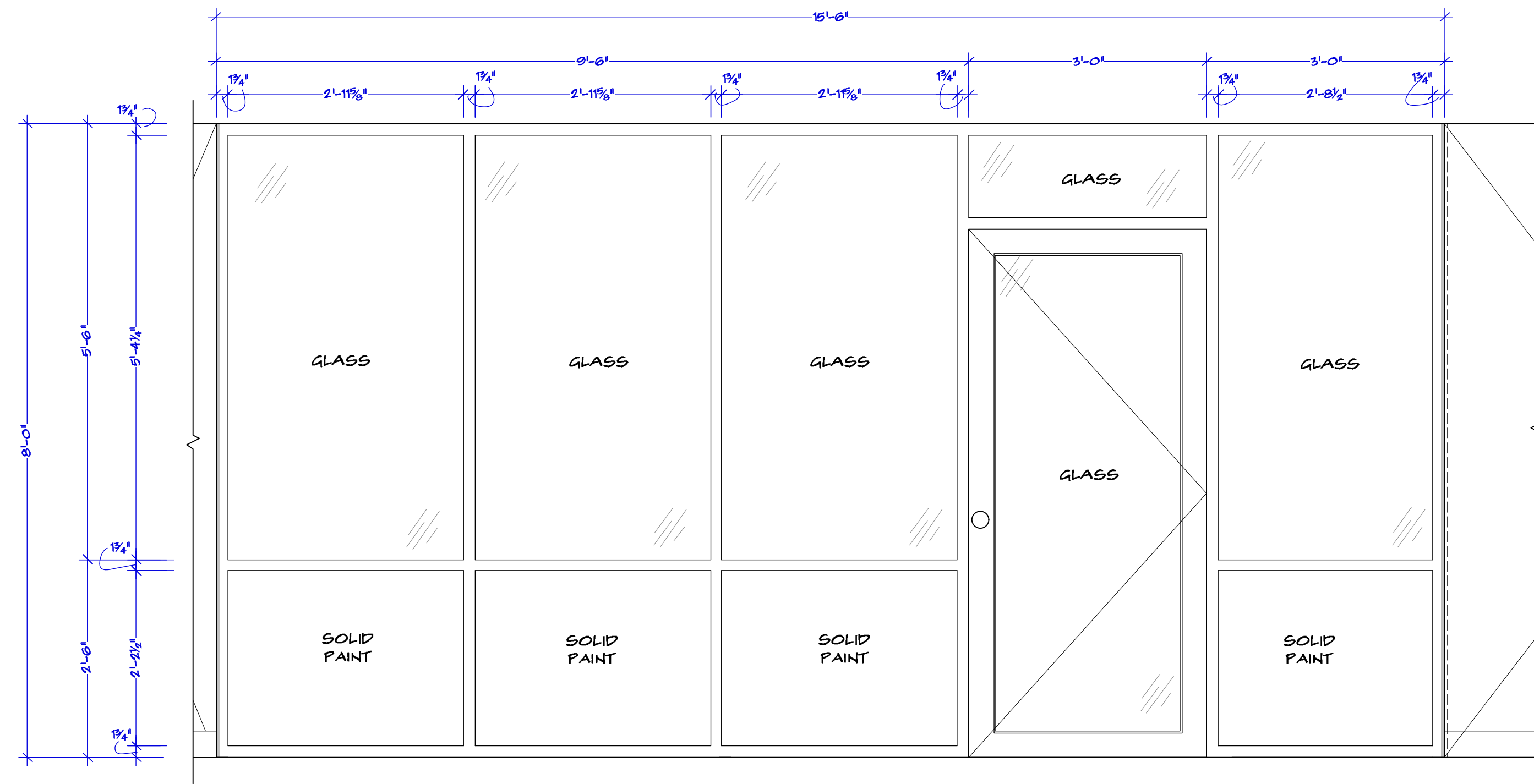
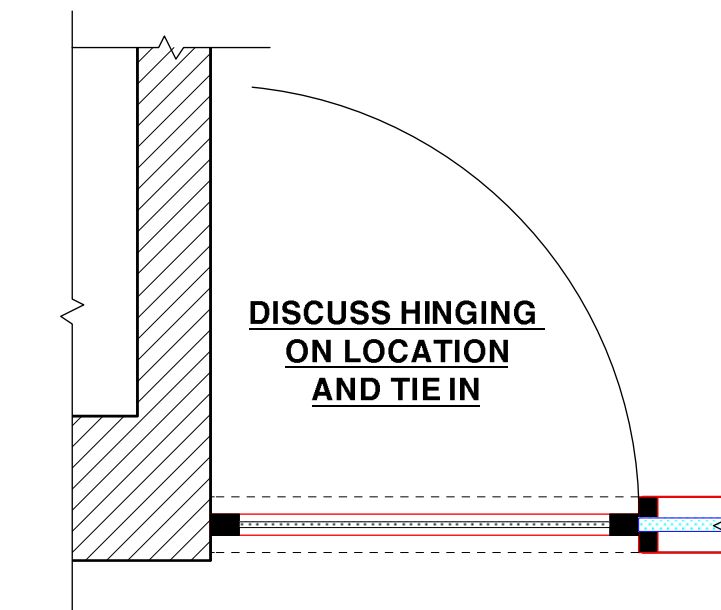
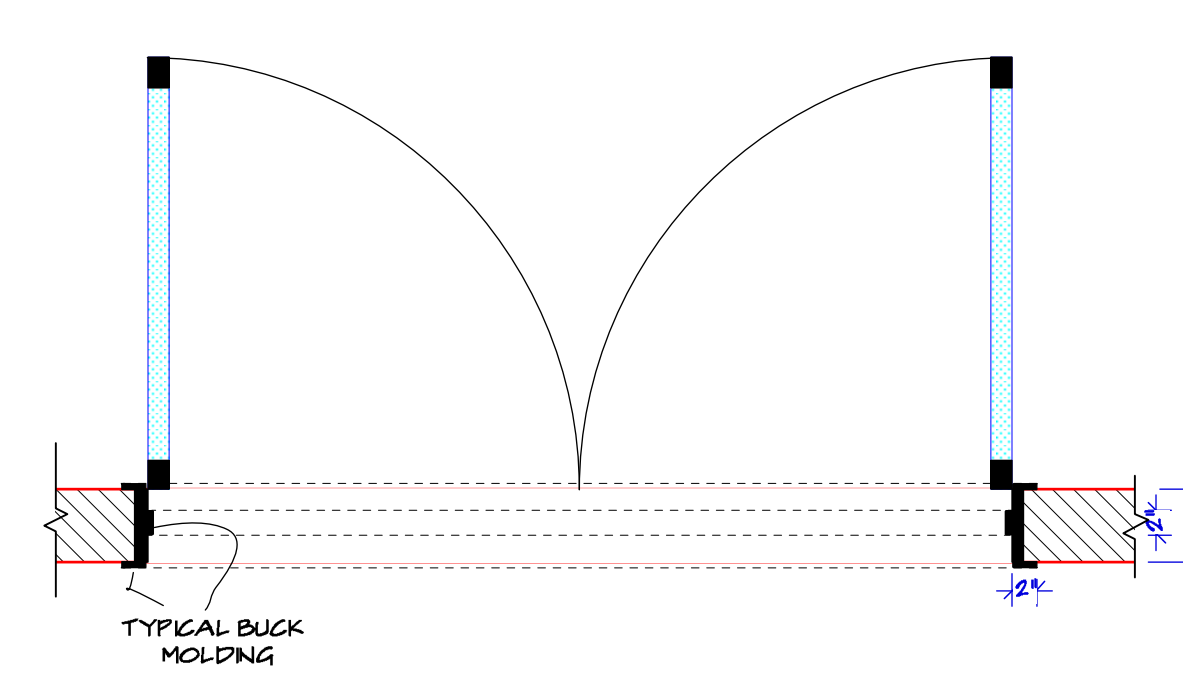
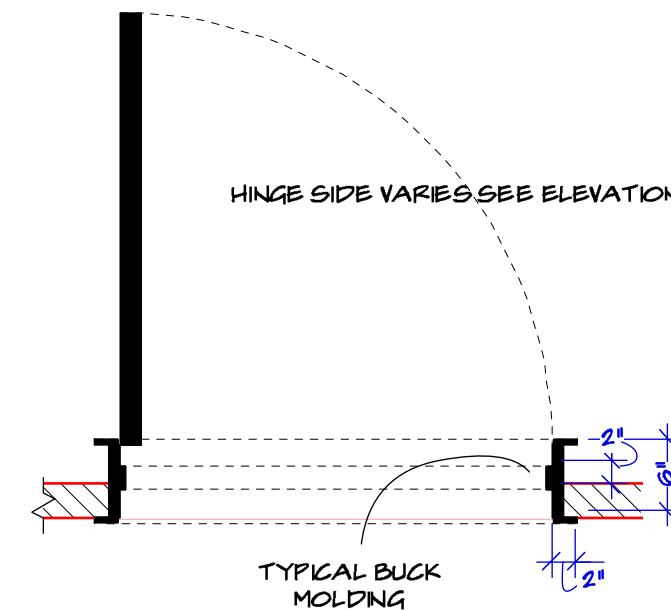
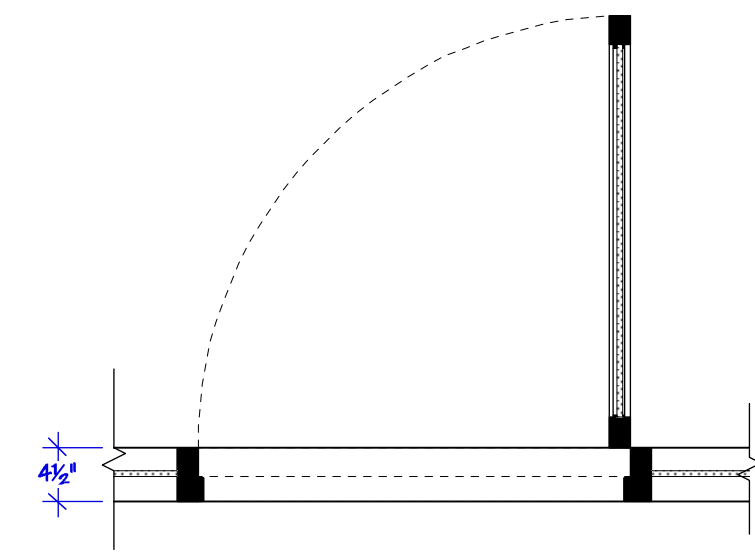
D2 DOOR 2 DETAIL  
SCALE: 3/4" = 1'-0"



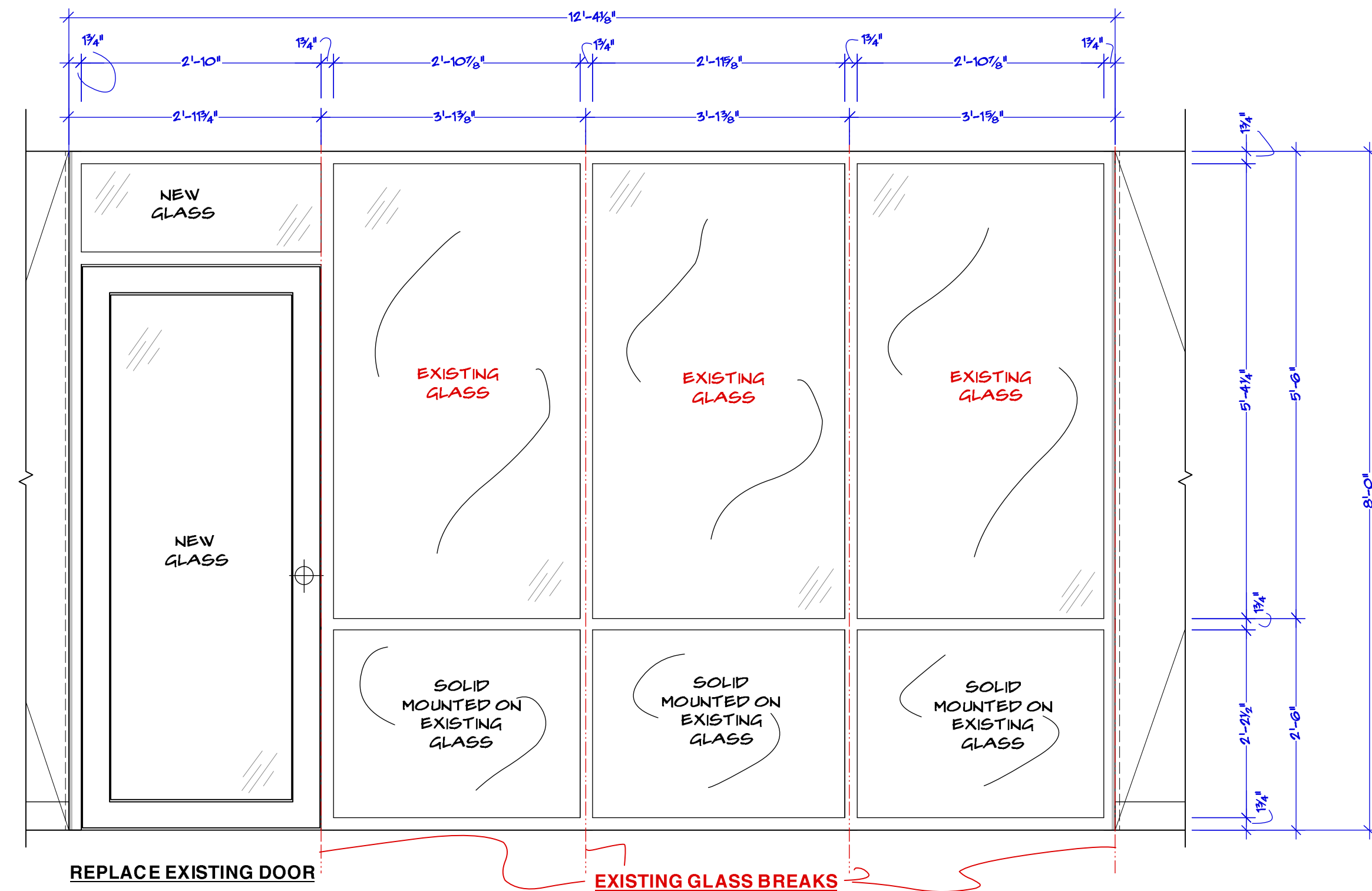
D3 DOOR 3 DETAIL  
SCALE: 3/4" = 1'-0"



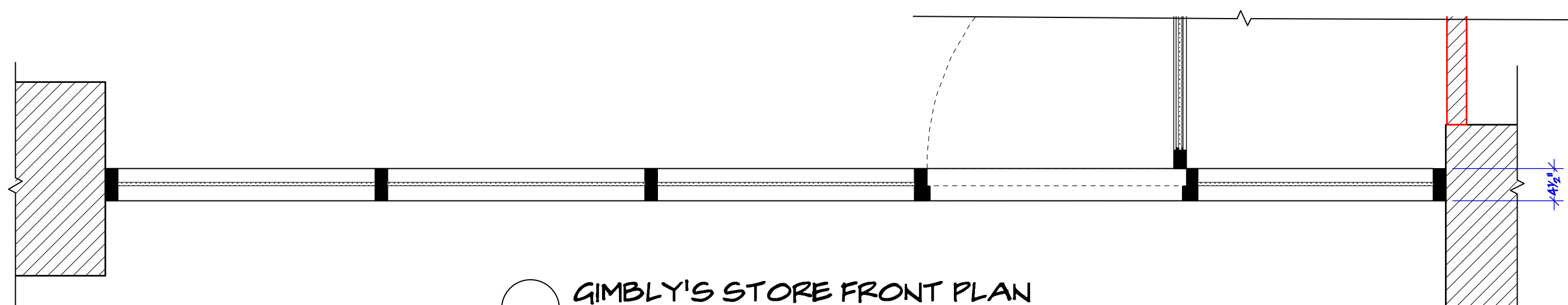
D4 DOOR 4 DETAIL  
SCALE: 3/4" = 1'-0"



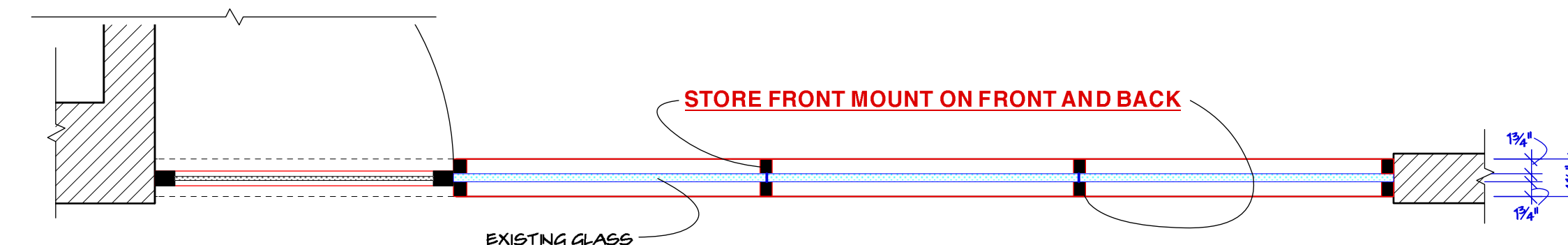
E STORE FRONT GIMBY'S DETAIL  
SCALE: 3/4" = 1'-0"



G BULLPEN STORE FRONT DETAIL  
SCALE: 3/4" = 1'-0"



GIMBY'S STORE FRONT PLAN  
SCALE: 3/4" = 1'-0"



BULLPEN STORE FRONT PLAN  
SCALE: 3/4" = 1'-0"

TRUE SIZE SCALE CHECK  
3" 2" 1" 0"

101-131-133\_FBI Manhattan HQ Elevations\_405 Park Ave\_3-8-19.rvt

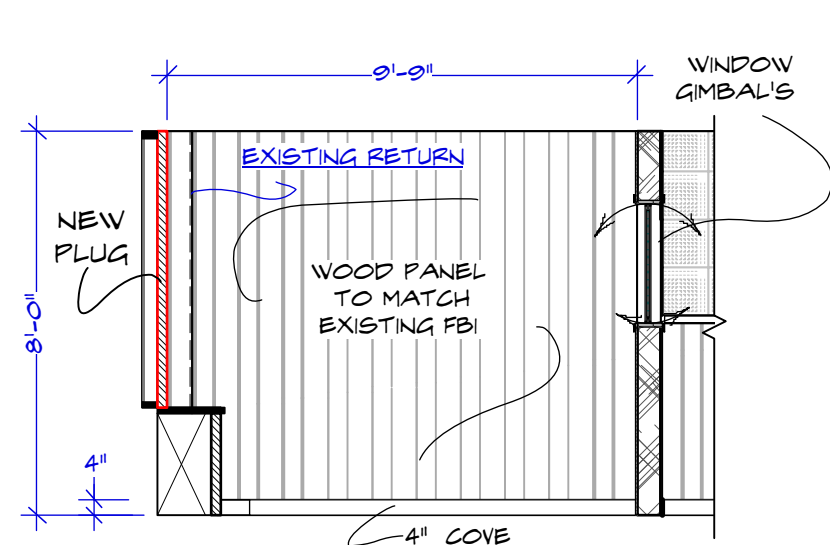


RELEASED 03/08/2019

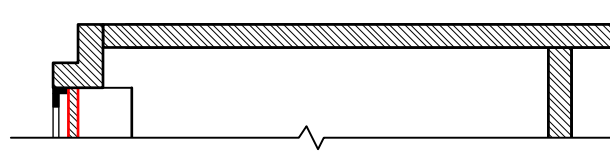
Episode:	101
Set #:	131-133
Scale:	3/4" = 1'-0"
Drawn by:	M. FAHRER
Drawing Date:	3/8/2019
Shoot Date:	03/20/2019
Sheet No.:	131-03

Set Name & Description:	FBI MANHATTAN HEADQUARTERS - DETAILS
Director:	VARIOUS
Location:	405 Park Ave 10022

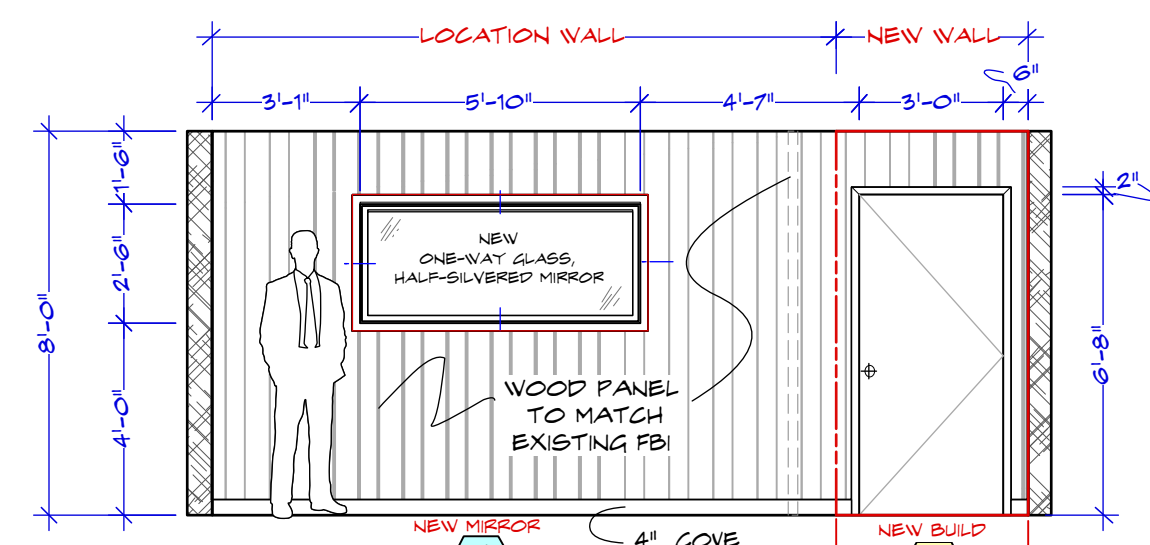
Exec Producer:	NIKKI TOSCANO
Line Producer:	BILL SELL
Address:	STEINER STUDIO 15 WASHINGTON AVE
Prod Designer:	CURT BEECH
Set Decorator:	SUSAN MARSHAL
Producer:	JERRY KUPFER
UPM:	BILL SELL
Art Director:	MARCI MUDD
Const. Coordinator:	NILES HORTON



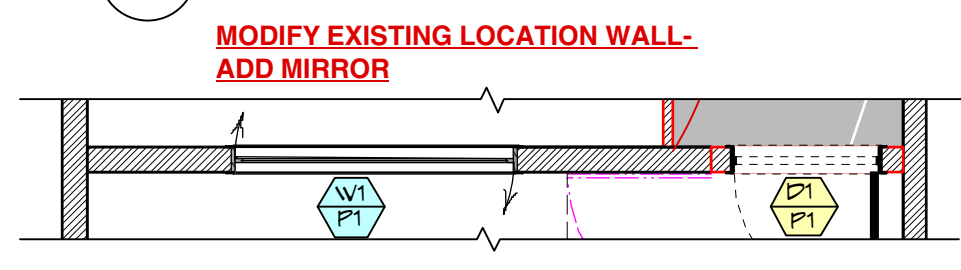
**A OBSERVATION WALL A #336**  
SCALE: 1/4" = 1'-0"



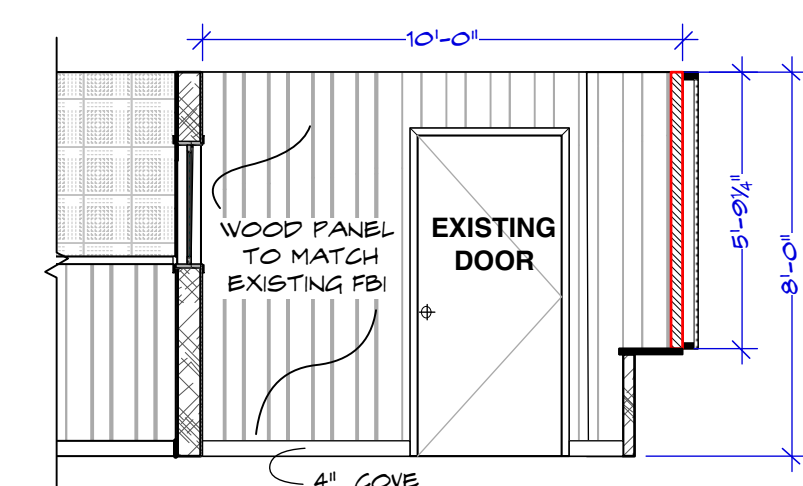
**WALL A PLAN**  
SCALE: 1/4" = 1'-0"



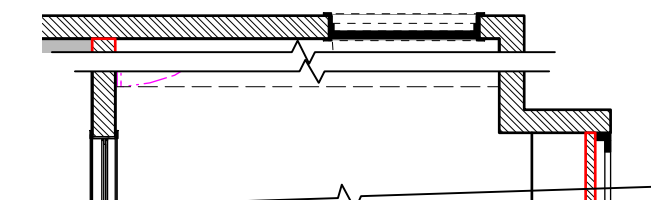
**B OBSERVATION WALL B #336**  
SCALE: 1/4" = 1'-0"



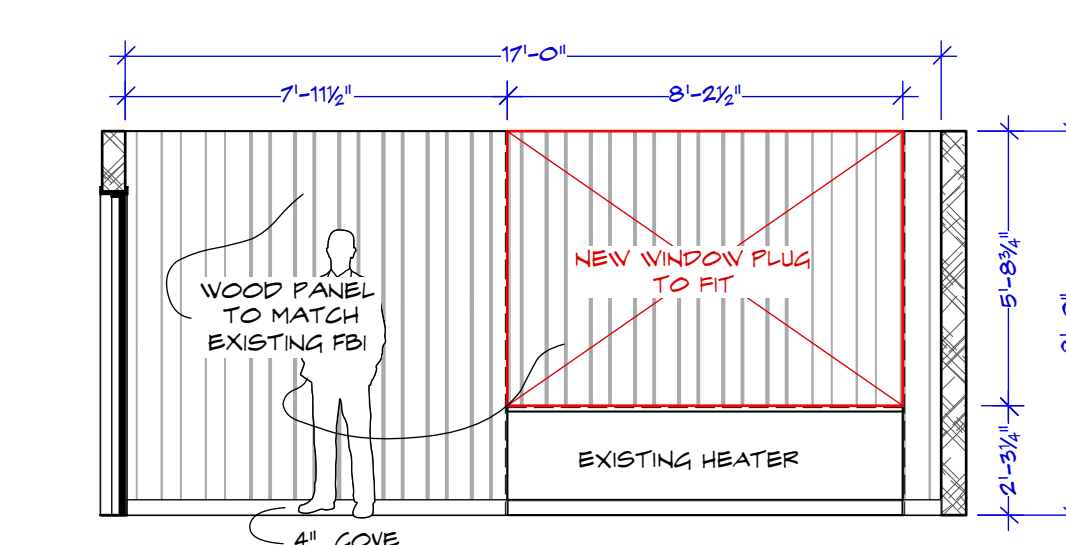
**WALL B PLAN**  
SCALE: 1/4" = 1'-0"



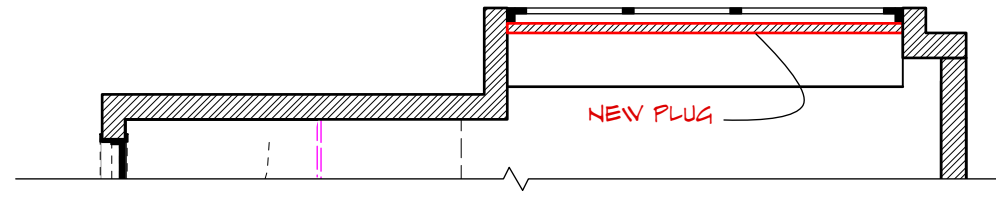
**C WALL C ELEVATION #336**  
SCALE: 1/4" = 1'-0"



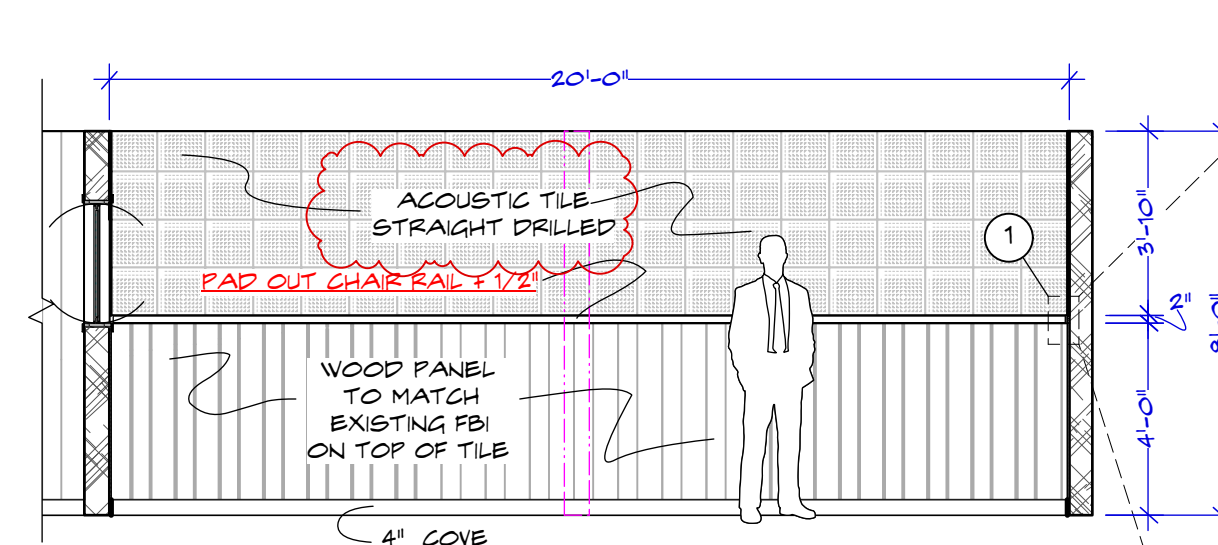
**WALL C PLAN**  
SCALE: 1/4" = 1'-0"



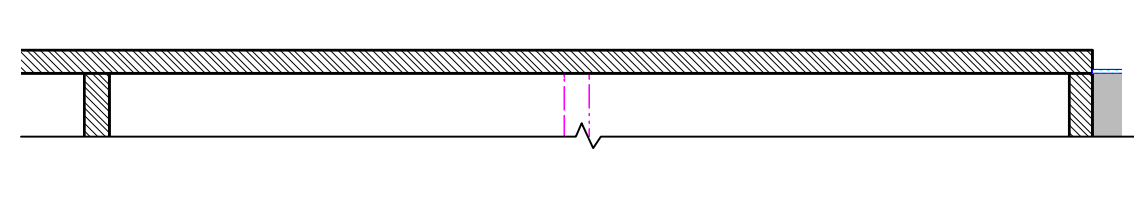
**D INTERVIEW RM WALL D #336**  
SCALE: 1/4" = 1'-0"



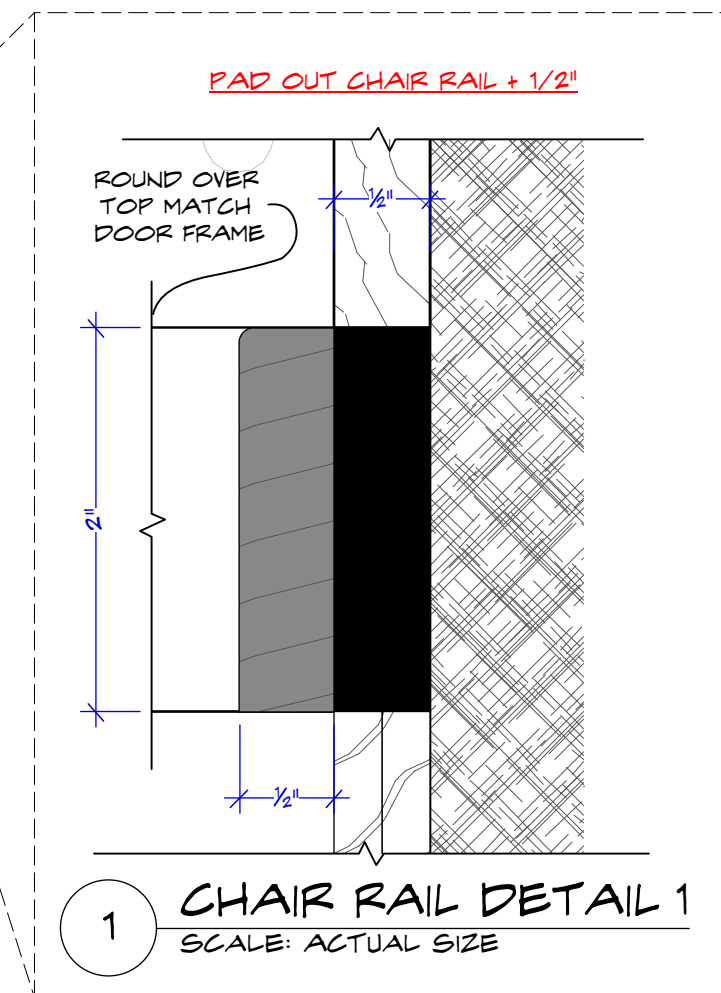
**WALL D PLAN**  
SCALE: 1/4" = 1'-0"



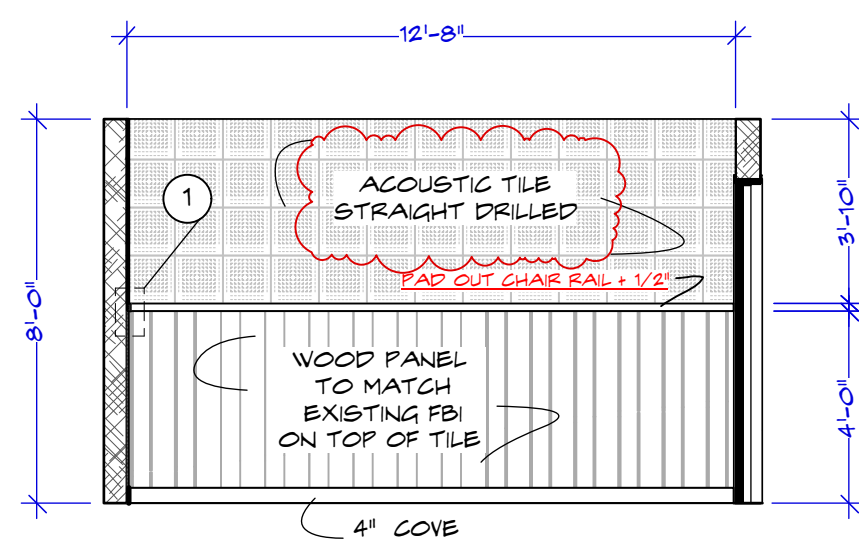
**E INTERVIEW RM WALL D #335**  
SCALE: 1/4" = 1'-0"



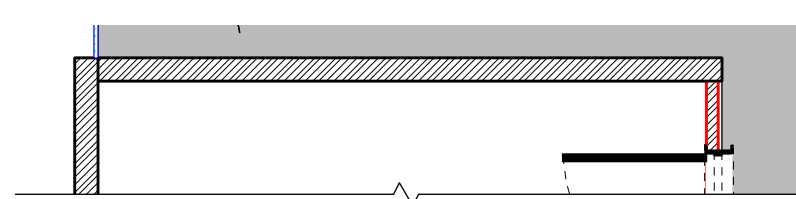
**WALL D PLAN**  
SCALE: 1/4" = 1'-0"



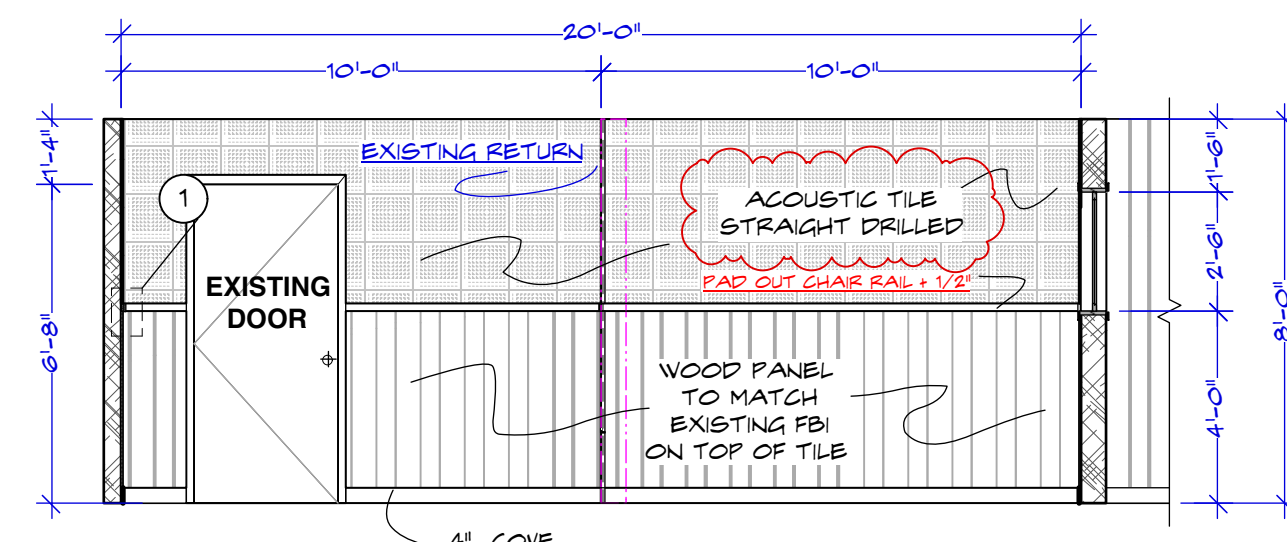
**1 CHAIR RAIL DETAIL 1**  
SCALE: ACTUAL SIZE



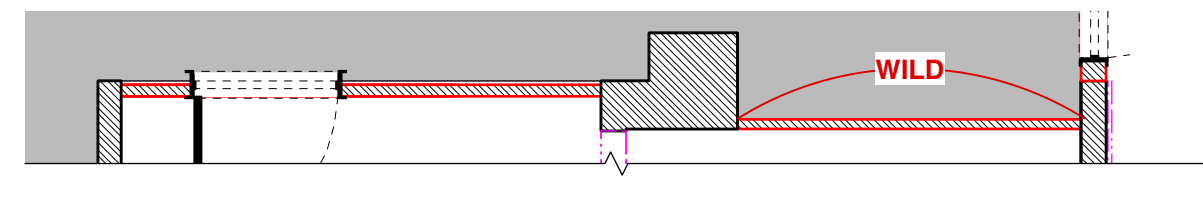
**F INTERVIEW ROOM F #335**  
SCALE: 1/4" = 1'-0"



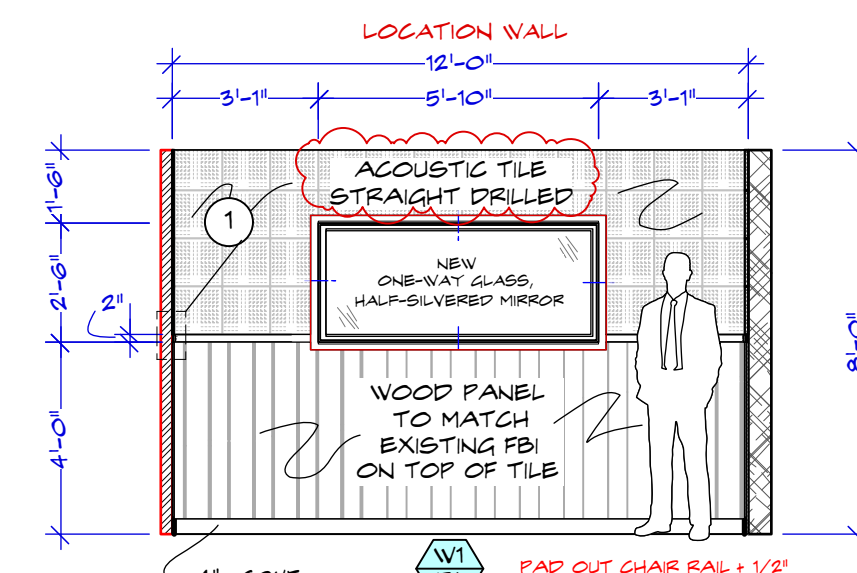
**WALL F PLAN**  
SCALE: 1/4" = 1'-0"



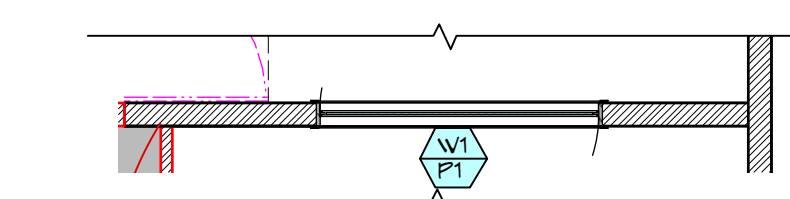
**G INTERVIEW WALL G #335**  
SCALE: 1/4" = 1'-0"



**WALL G PLAN**  
SCALE: 1/4" = 1'-0"

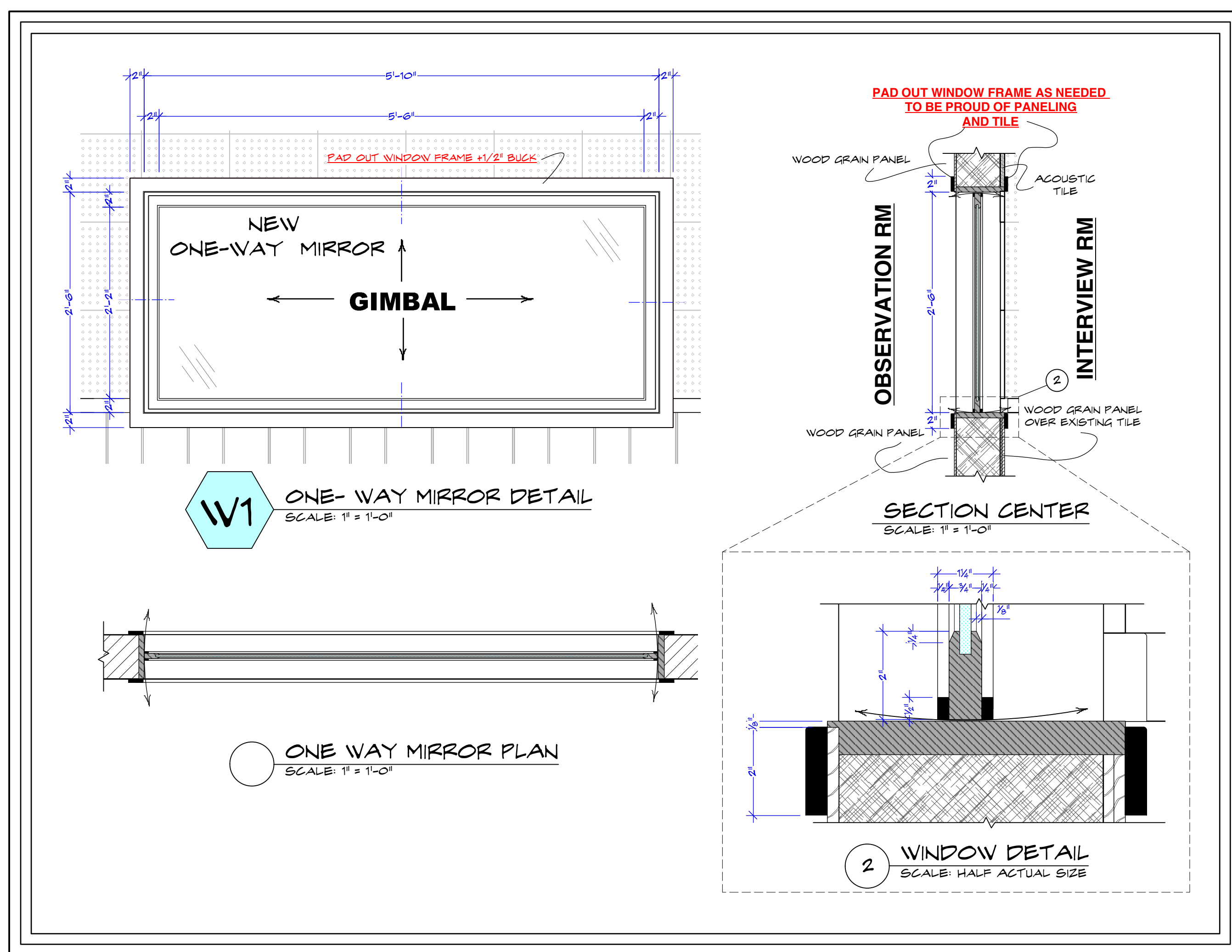


**H INTERVIEW WALL H #335**  
SCALE: 1/4" = 1'-0"



**WALL H PLAN**  
SCALE: 1/4" = 1'-0"

**NOTES:**  
 SET DECK - REMOVE ALL BATHROOM FIXTURES. LEAVE TILEBOARD UP.  
 - 6 BOXES "STRAIGHT DRILLED" TILE # 58779 FROM TPC INTERIORS  
 - RANDOM TILES WILL BE DOUBLED UP SEE SHEET 335 - 02

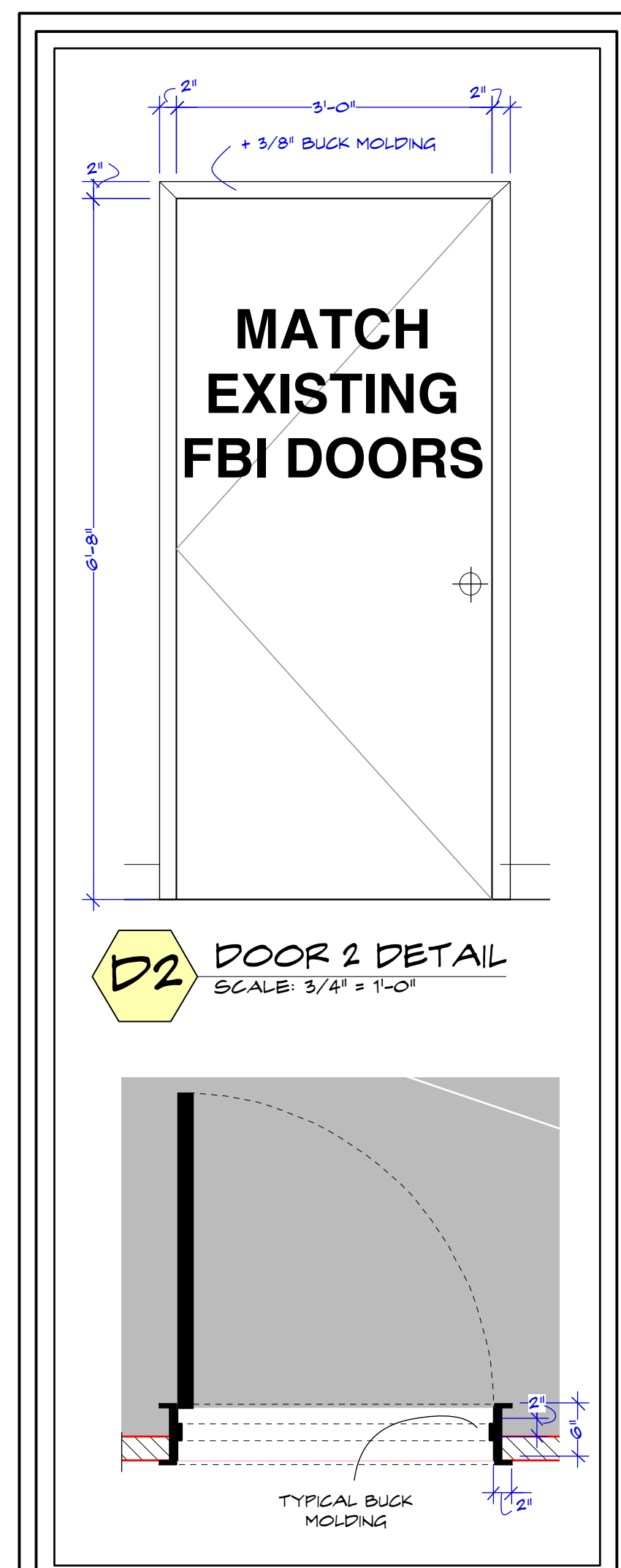


**W1 ONE-WAY MIRROR DETAIL**  
SCALE: 1" = 1'-0"

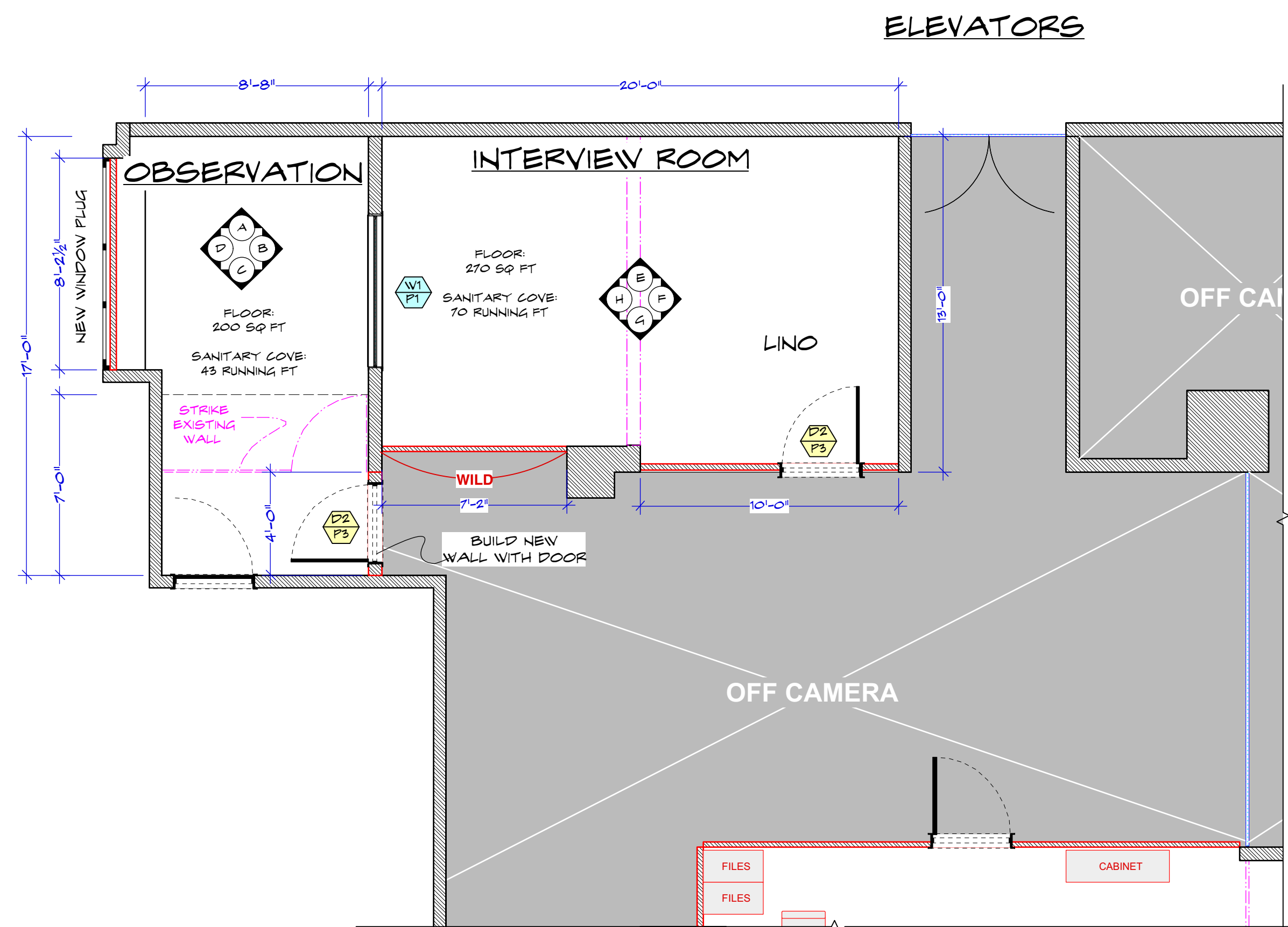
**ONE WAY MIRROR PLAN**  
SCALE: 1" = 1'-0"

**SECTION CENTER**  
SCALE: 1" = 1'-0"

**2 WINDOW DETAIL**  
SCALE: HALF ACTUAL SIZE



**D2 DOOR 2 DETAIL**  
SCALE: 3/4" = 1'-0"



**1 SPOTTING PLAN INTERROGATION/ OBSERVATION RM**  
SCALE: 1/4" = 1'-0"

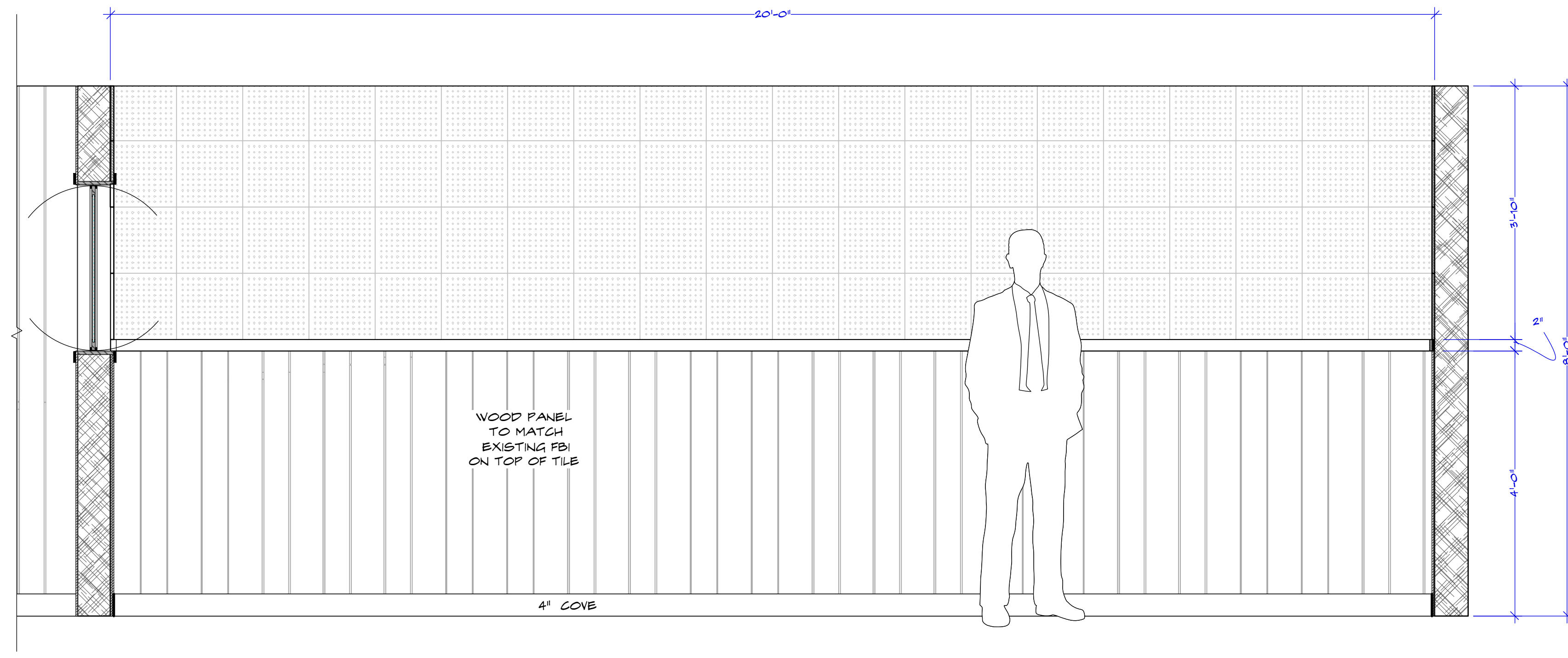
TRUE SIZE SCALE CHECK  
 3" 2" 1" 0"

107-835-336 FBI Manhattan HQ INTERVIEW RM Elevations\_405 Park Ave\_8-25-18.rvt

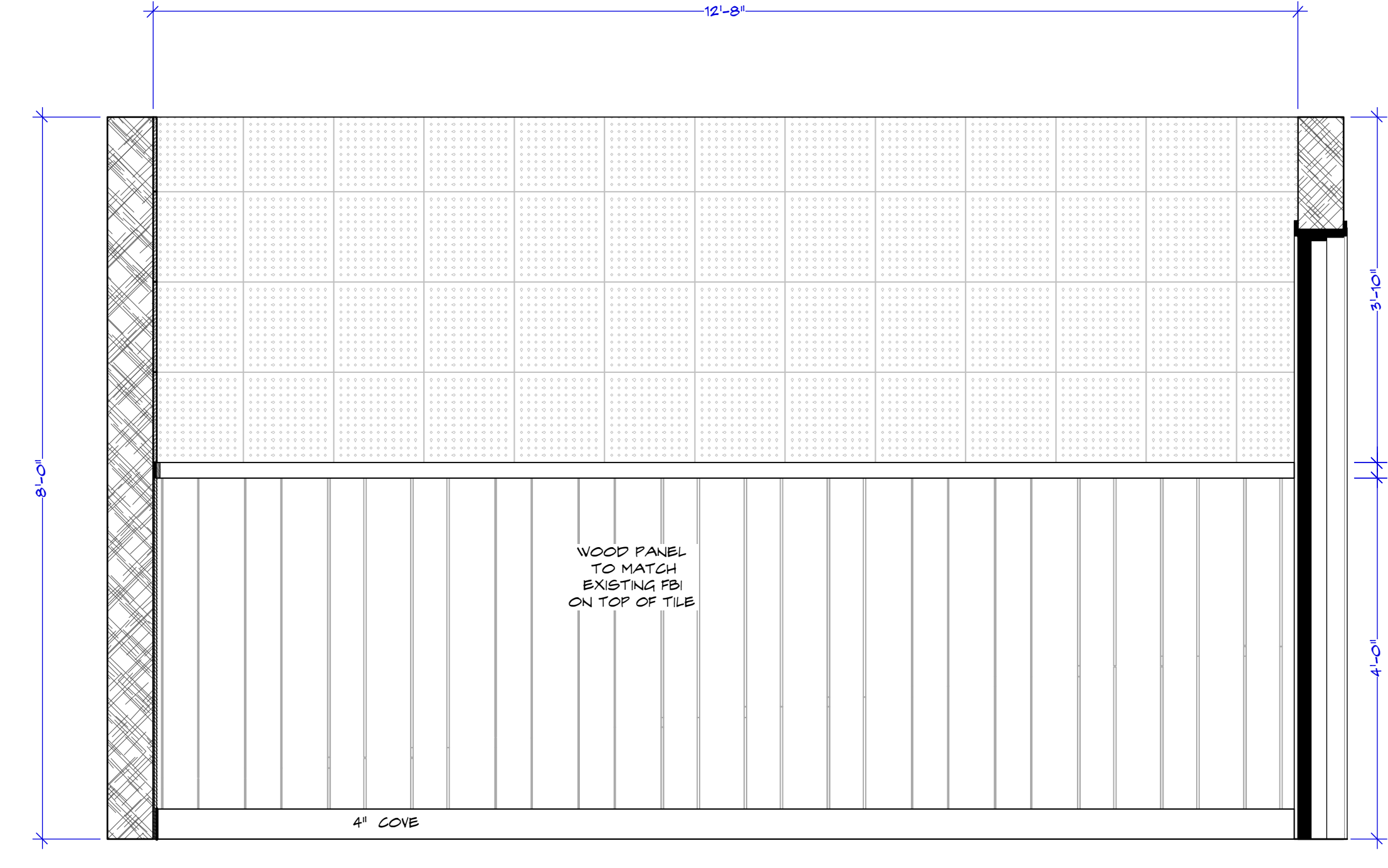


REVISED - TILE UPDATED 7-8-19 REVISED 07/08/2019

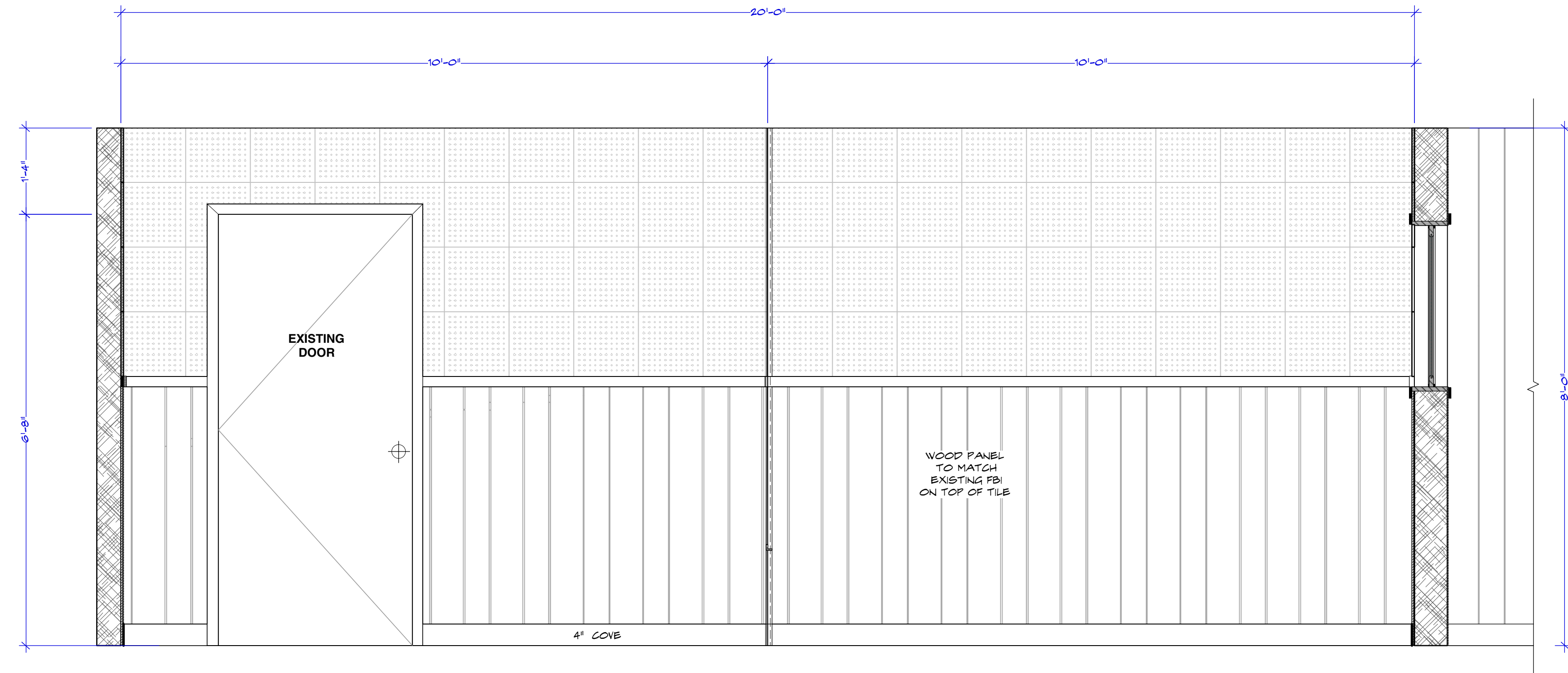
Episode: 107	Set #: 335-336	Director: VARIOUS	Location: 405 Park Ave 10022
Set Name & Description: FBI - OBSERVATION RM #336 / INTERVIEW RM #335	Producer: NIKKI TOSCANO	Art Director: MARCI MUDD	Const. Coordinator: NILES NORTON
Drawn by: M. FAHRER	Line Producer: BILL SELL	UPM: BILL SELL	Address: STEINER STUDIO 15 WASHINGTON AVE
7/8/2019	Prod. Designer: CURT BEECH	Exec Producer: NIKKI TOSCANO	Line Producer: BILL SELL
Shoot Date: TBD	Set Decorator: SUSAN MARSHAL	Prod. Designer: CURT BEECH	Line Producer: BILL SELL
Scale: NOTED	Director: VARIOUS	Art Director: MARCI MUDD	UPM: BILL SELL
Sheet No.: 335-01	Location: 405 Park Ave 10022	Const. Coordinator: NILES NORTON	Address: STEINER STUDIO 15 WASHINGTON AVE



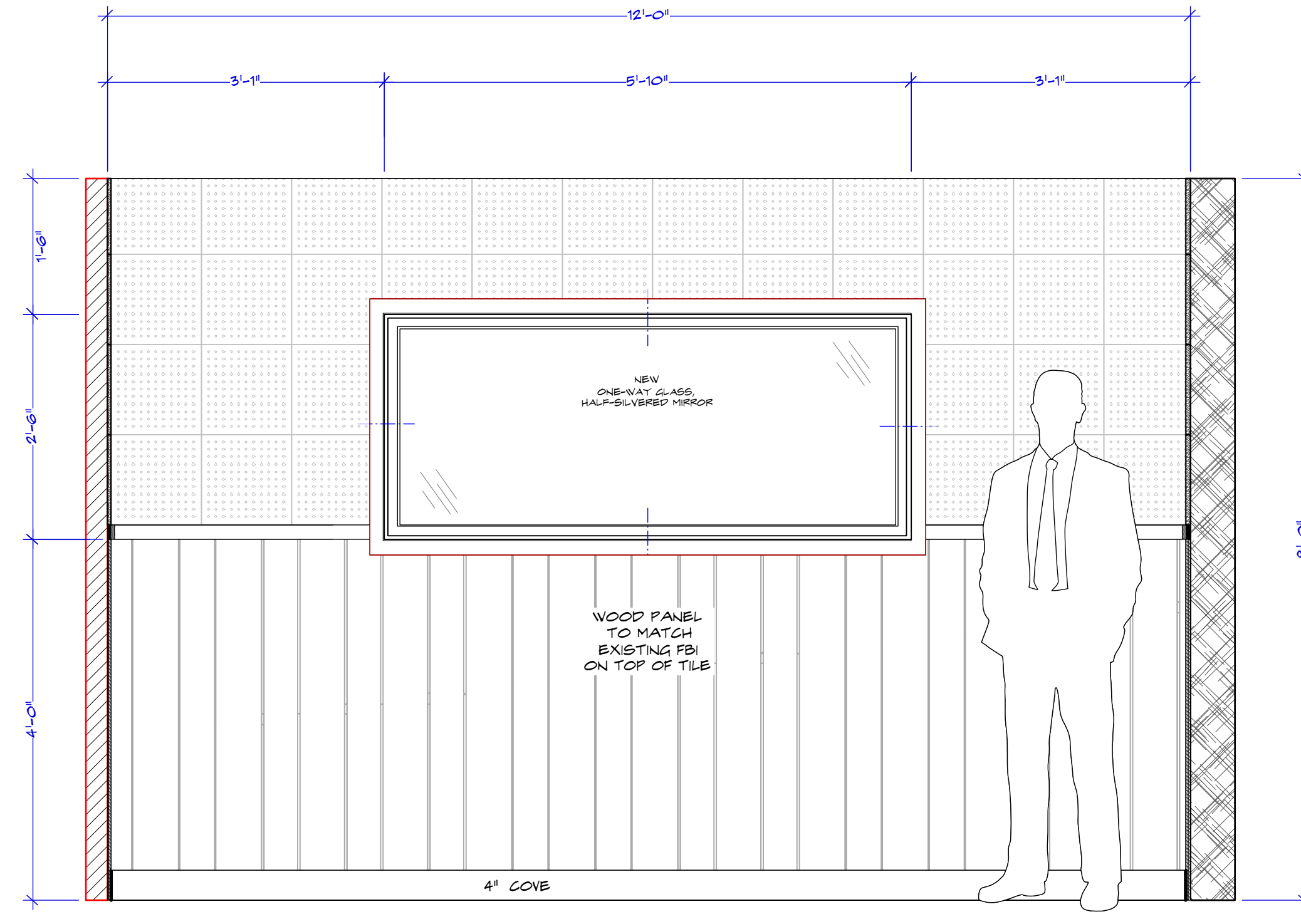
**E** INTERVIEW RM WALL D #335  
SCALE: 3/4" = 1'-0"



**F** INTERVIEW ROOM F #335  
SCALE: 3/4" = 1'-0"



**G** INTERVIEW WALL G #335  
SCALE: 3/4" = 1'-0"



**H** INTERVIEW WALL H #335  
SCALE: 3/4" = 1'-0"



TRUE SIZE SCALE CHECK

107-335-336 FBI Manhattan HQ INTERVIEW RM Elevations\_405 Park Ave\_325-13.rvt

RELEASED 07/08/2019

Exec Producer: NIKKI TOSCANO	Producer: UPM: BILL SELL	Set Name & Description: FBI - OBSERVATION RM #335/ TILE DETAIL	Episode: 107	Drawn by: M. FAHRER	Sheet No.: 335-02
Line Producer: BILL SELL	Address: STEINER STUDIO 16 WASHINGTON AVE	Director: VARIOUS	Set #: 335-336	7/8/2019	TBD
Prod. Designer: CURT BEECH	Art Director: MARCI MUDD	Location: 405 Park Ave 10022	Scale: NOTED		
Set Decorator: SUSAN MARSHAL	Const. Coordinator: NILES NORTON				